

MSc/MA (by Research)

The University of Mauritius so far runs the following research programmes:

- PhD
- MPhil/PhD
- MPhil
- MRes

This proposal is to extend the research opportunities and offer an MSc/MA (by Research), as is done in many good universities abroad such as Oxford University, University of London, University of Edinburgh, University of Glasgow, University of Manchester, University of Sheffield, University of Warrick, Cranfield University, University of New South Wales, Durham University).

The MSc/MA (by Research) is a flexible programme of demand-based research supported by an individually tailored system of learning material; hence, it is designed for highly motivated full-time research student as well as graduates employed within industries or organisations.

Students will work with as part of a research group to complete a project of Masters quality which may also deliver real benefit to the student or to the supporting industry/organisation.

An MSc/MA (by Research) will give a student hands-on experience of his/her specialist area and can be used in preparation for an MPhil or a PhD.

An MSc/MA (by Research) can also prepare students for careers in science or administration, business careers, careers that interact with technological or other sectors, and work where skills in observation, recording and analysis, and proficiency in knowledge transfer are at a premium.

This degree will be available in all faculties or centres.

The MSc/MA (by Research) may be taken in full-time and part-time mode.

It is envisaged that MSc/MA (by Research) will be awarded on the basis of:

- a thesis submission based on a research project worth 36 credits.

ONLINE APPLICATION

The online application for the MSc/MA by Research **will not be open** during the periods **May to July** and **mid-November to end of February** as from the academic year 2015/2016.

ENTRY REQUIRMENTS:

Applicants should have, or be expected to achieve, at least a Second Class Second Division Undergraduate Honours Degree or its equivalent in the relevant discipline. Other relevant qualifications, together with considerable experience, may be considered.

PROCESSING OF APPLICATIONS

The processing of the application is outlined in the flow chart (see **Annex A**).

After the research proposal has been approved by the Department and Faculty/Centre Board and Teaching & Research Committee (TRC), Senate will be informed. The student may proceed with the research, analysis and writing up of the thesis as from TRC's approval and upon registration.

Members in the relevant field may be co-opted at the level of the Faculty/Centre Board during the consideration of the MSc/MA Research programmes.

DURATION:

The MSc/MA (by Research) may be taken in full-time and part-time mode:

- 1-1.5 Yrs Fulltime
- 2-3 Yrs Part-time

As a rough guide, for full time students, the literature survey and any technical knowledge required should be completed within three (3) months. The next six months should be occupied by the experimental/implementation work. The final three (3) months should be taken up with analysing results and the write-up of the thesis. However, an MSc/MA (by Research) project is obviously of less scope and size than a PhD and the candidate must show clear evidence of independent thinking in the thesis which must be his or her own work. Therefore, the supervisors will expect the student to be showing initiative and ideas very soon into the project schedule.

MONITORING MECHANISM:

Students will be required to submit a six-monthly Progress Report and the Student Progress Form (SPF) which will constitute the formal mechanism by which the research programme is monitored (akin to the ones for MPhil/MPhil/PhD and PhD students in the Handbook of "Rules, Regulations and Procedures governing MPhil/PhD programmes").

ASSESSMENT:

For the research project, the examiners must be satisfied that the thesis shows competence in investigating the chosen topic and that the results have

been presented in a lucid and scholarly manner.

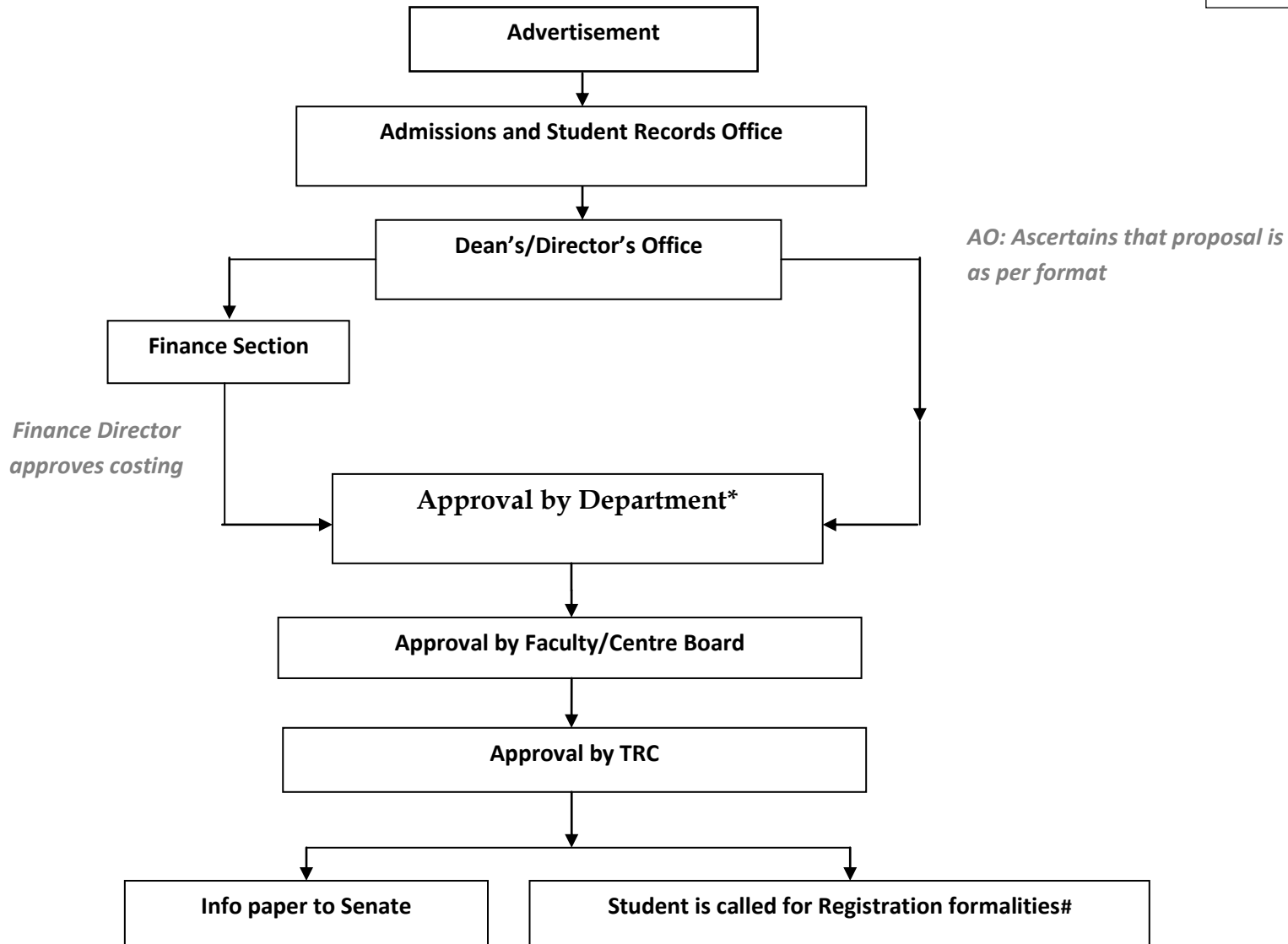
The thesis should not normally exceed 100 pages or 30,000 words in length. Satisfactory oral examination is also required.

The overall assessment (thesis + compulsory module) will be in a proportion equivalent to the credits (i.e. 5:1). There will be an Internal Assessor and an External Assessor for the examination of the thesis.

AVAILABLE SUPPORTS:

- Potential student will be directed towards a supervisor with whom s/he will meet to discuss and draft a research project proposal.
- Upon registration, the student and the supervisor will meet regularly to discuss the research project and the writing of the thesis.
- Students will have access to all the general academic facilities of the University.
- Students are welcome to attend all seminars and workshops organised by the University.
- Students will be given the opportunity to audit at least 2 (two) modules in the relevant field of their research.

Approval Process for MSc/MA by Research Proposal



*To be convened within 2- 3 weeks following receipt of applications.

#The time lapse between submission of applications and approval by Faculty/Centre Board & TRC should **not exceed three (3) months**.

Footnote:

- Withdrawal from MSc/MA by Research needs to be approved by Faculty/Centre Board and Info paper to be submitted to TRC & Senate.
- Termination of Student Registration of MSc/MA by Research needs to be approved by Faculty/Centre Board & TRC and Info paper to be submitted to Senate.

Senate approved (576th Meeting - 25.03.2015).

(QA Updated on 31.07.15)