

# What I have learnt as an interventional cardiologist in Mauritius





# What I have learnt as an interventional cardiologist in Mauritius

**Dr Muhammad Ali Abdool**

**Interventional Cardiologist - DDY Cardiac centre**

**CCST Cardiology (UK)**

**CCST Internal Medicine (UK)**

**MRCP (London, UK)**

**Cardiac CT (UK)**

**Pg Dip Med Education (Manchester, UK)**

**MBCChB (Manchester, UK)**

**May 2024**

# About me!

MANCHESTER  
1824

The University of Manchester

- SSRN national scholarship
- Medical Studies in Manchester
- MRCP
- General Cardiology
- Interventional Cardiology
- Complex and High Risk Intervention
- Consultant at Stepping Hill Hospital with Interventional sessions at Wythenshawe hospital

# Our landscape!

- Very high burden of Diabetes
- Poor Dietary habits
- No exercise
- Smoking
- Hypertension
- Bad Genes



# Our patients

An aerial photograph of a tropical coastline. On the left, a steep, dark grey cliff face rises from a lush green forest. A narrow, white sandy beach runs along the base of the cliff and extends into the distance. The water is exceptionally clear, showing various shades of turquoise and light blue, with visible coral reefs and sandy patches on the seabed. In the far distance, the ocean transitions to a deep blue, and a small island or headland is visible under a clear sky.

- Early disease
- Multivessel disease
- Diffuse disease
- High CABG rates
- Limited access to complex cardiac intervention

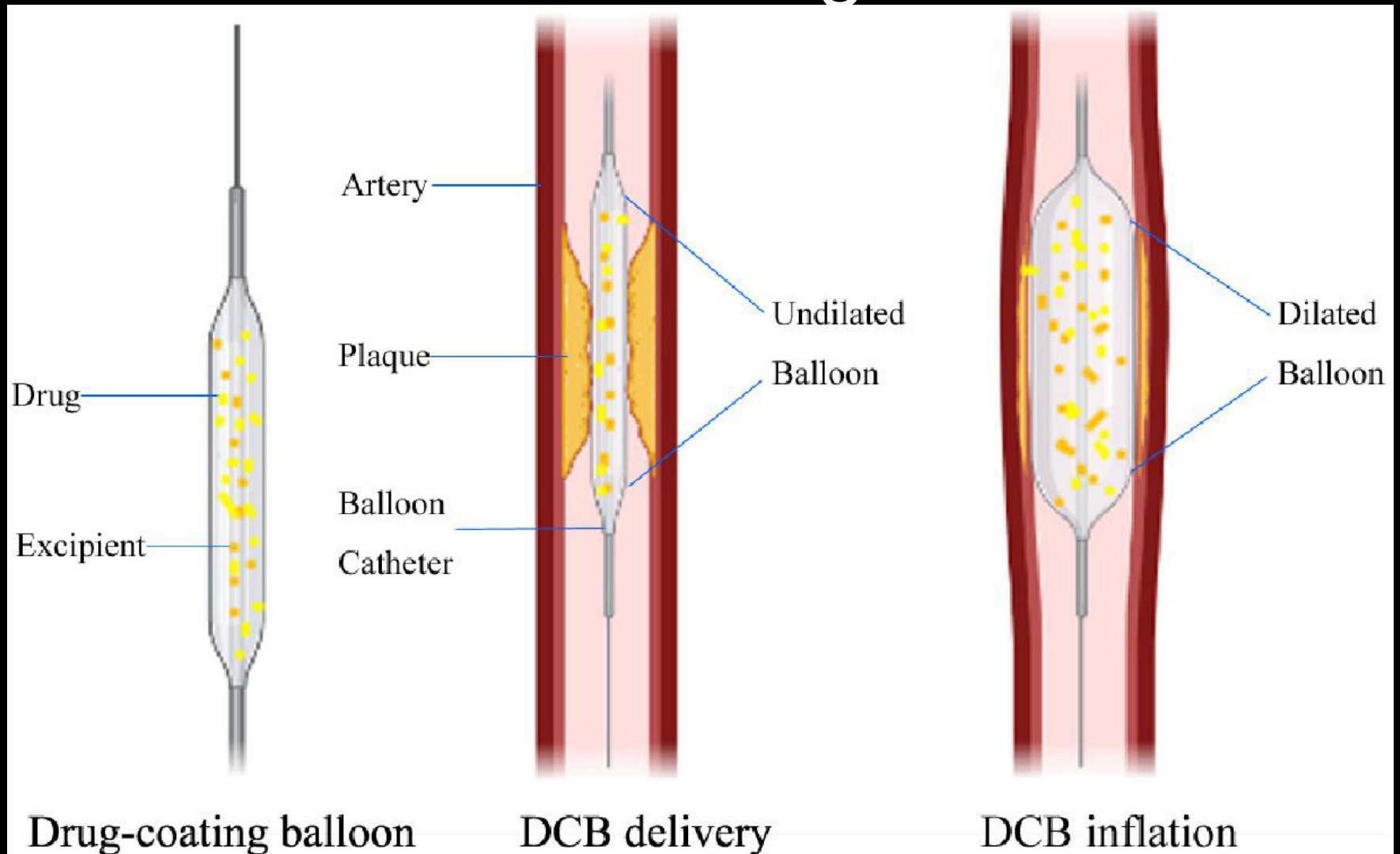
# What I have learnt!

- High burden of disease
- Most cases are high risk
- Most cases are complex
- Our patients are very frail
- We have small arteries
- We have very calcified arteries

# About me - Post Move - Previously Surgery or conservative management as only option

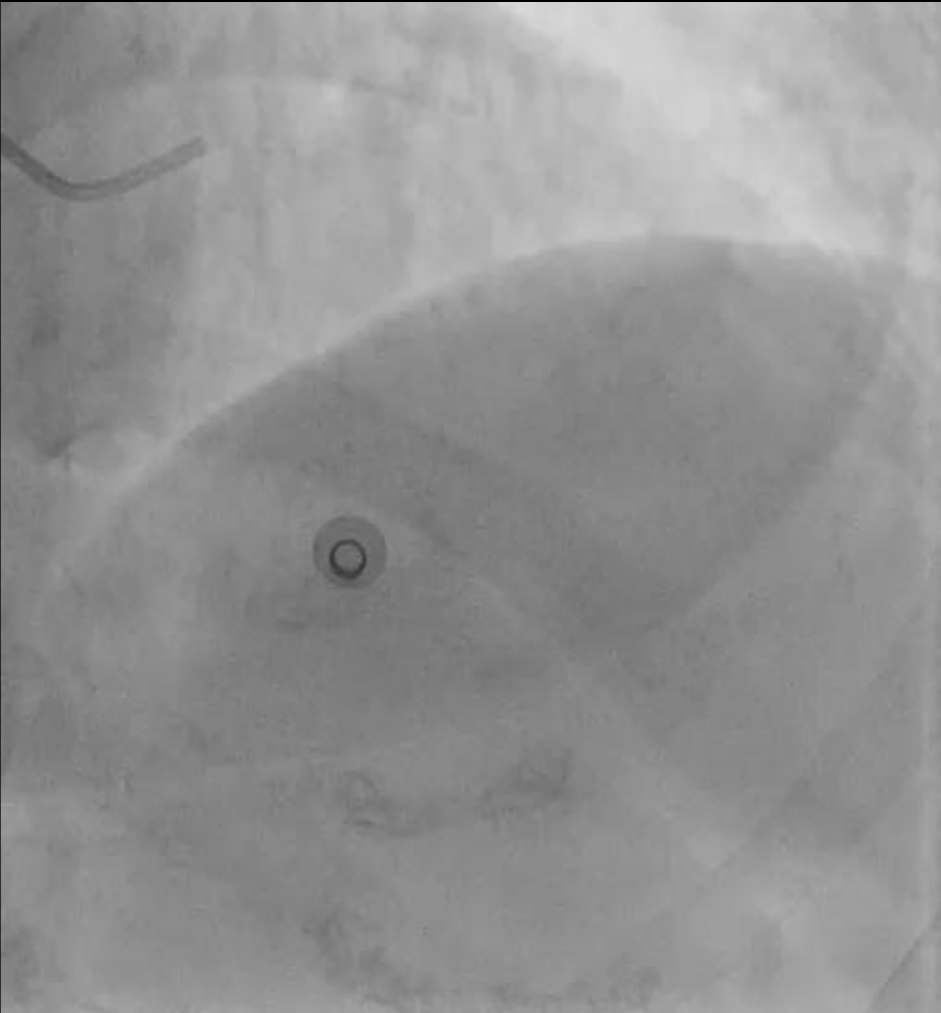
- Multivessel stenting
- LMS stenting
- High risk cases
- CTO intervention
- Post CABG intervention
- Post PCI re-intervention
- Calcified arteries
- TAVI

# New perspectives instead of Stenting





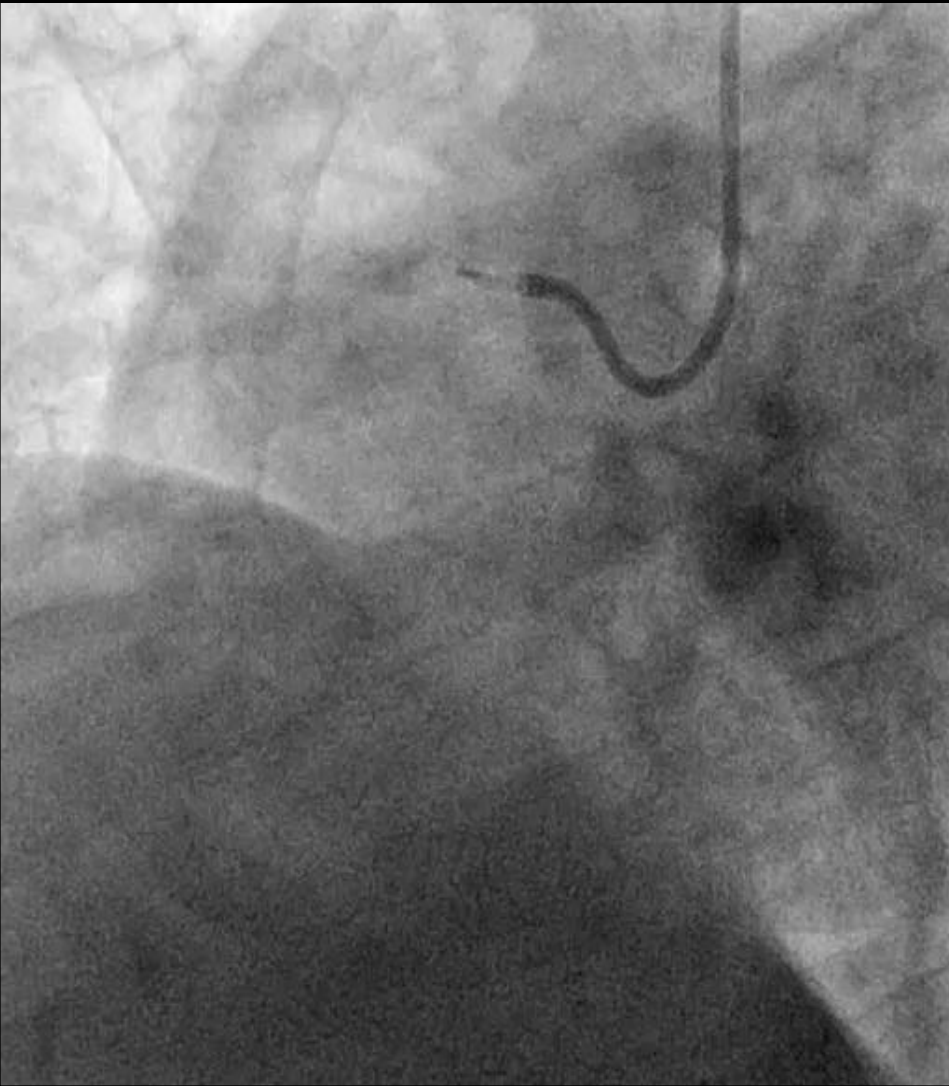
# Case 1 - 62F Thalassaemia Hb 9



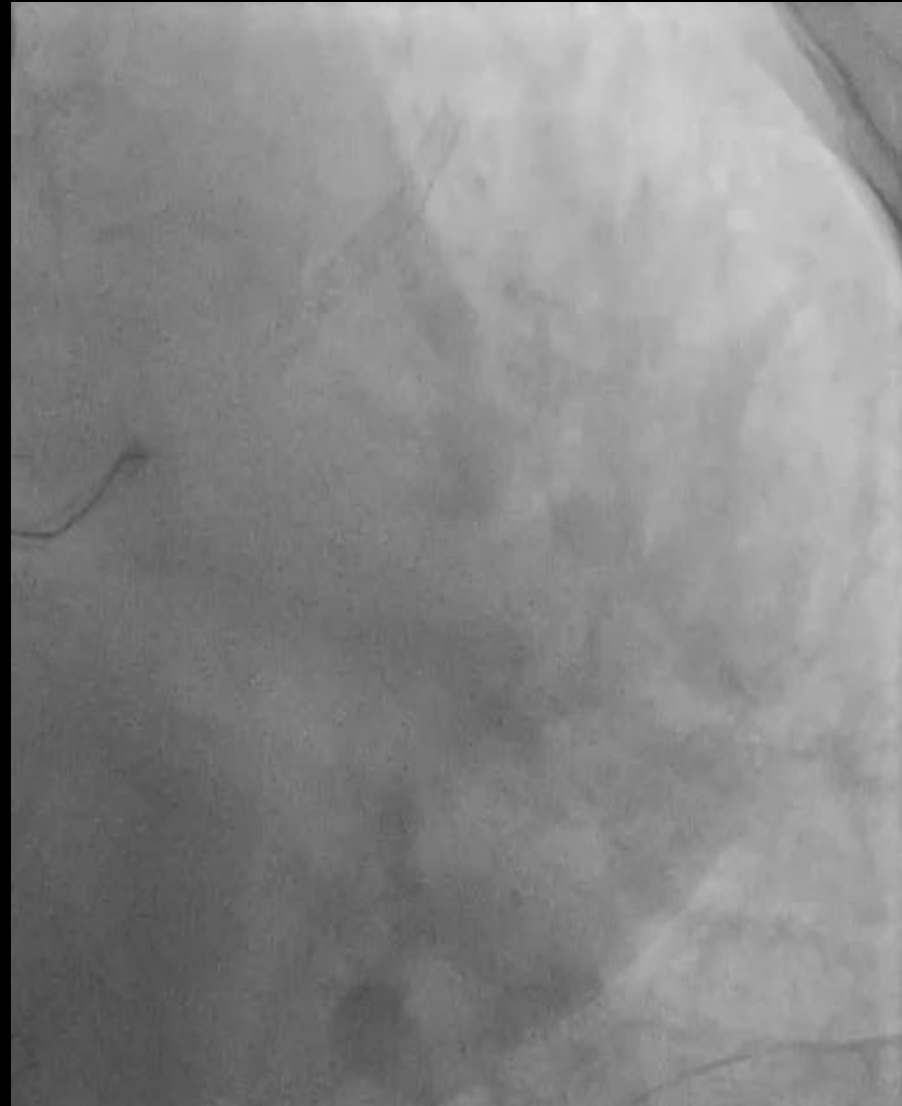
# Case 1 - 62F Thalassaemia Hb 9



# Case 2 - 36M smoker BMI 42 CTO RCA



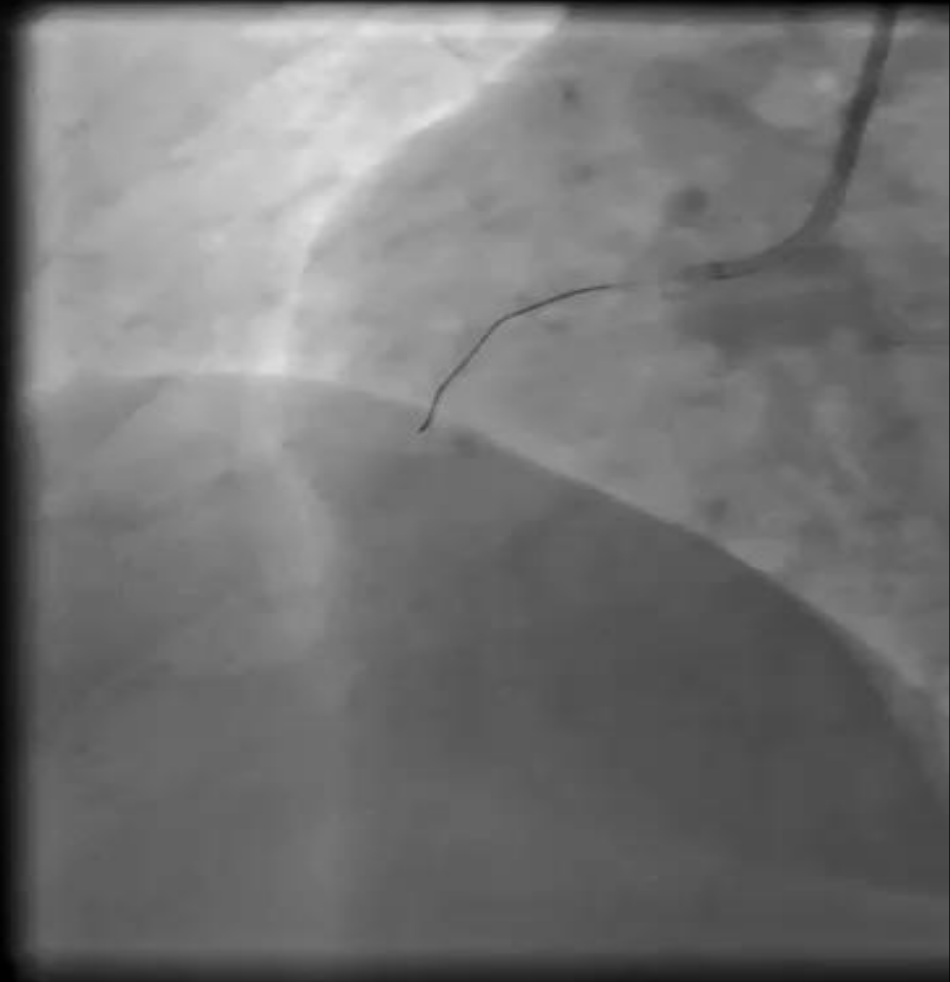
Case 2 - 36M smoker BMI 42  
CTO RCA + LAD + Cx



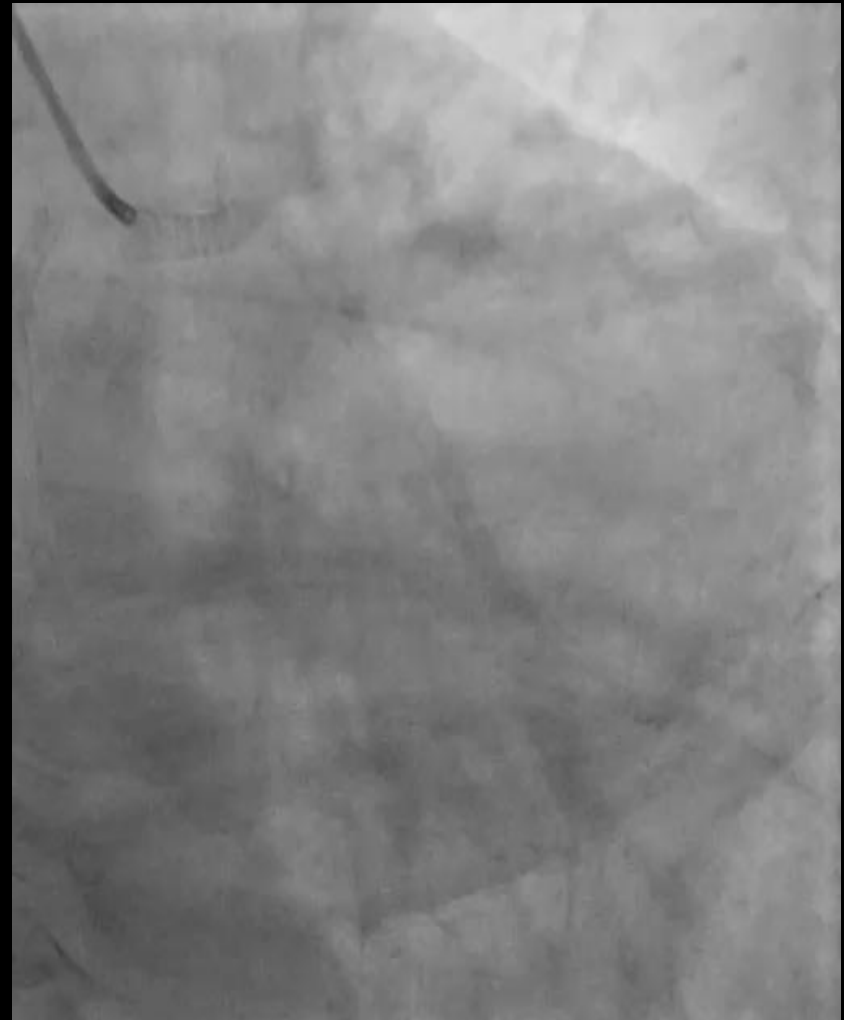
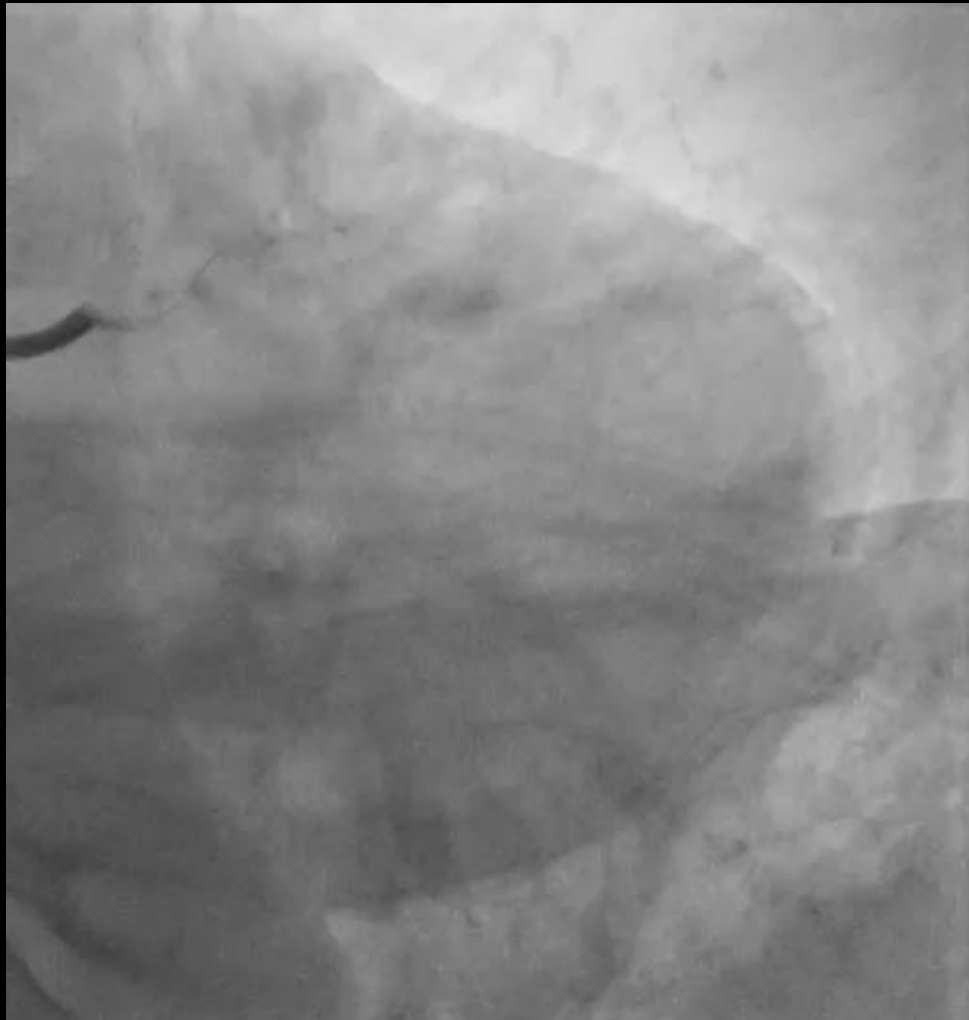
# Case 3 - 58F EF20% - LMS/LAD



Case 3 - 58F EF20% - LMS/LAD + RCA



# Case 4 - 70 F CABG refusal - LMS / CTO Cx

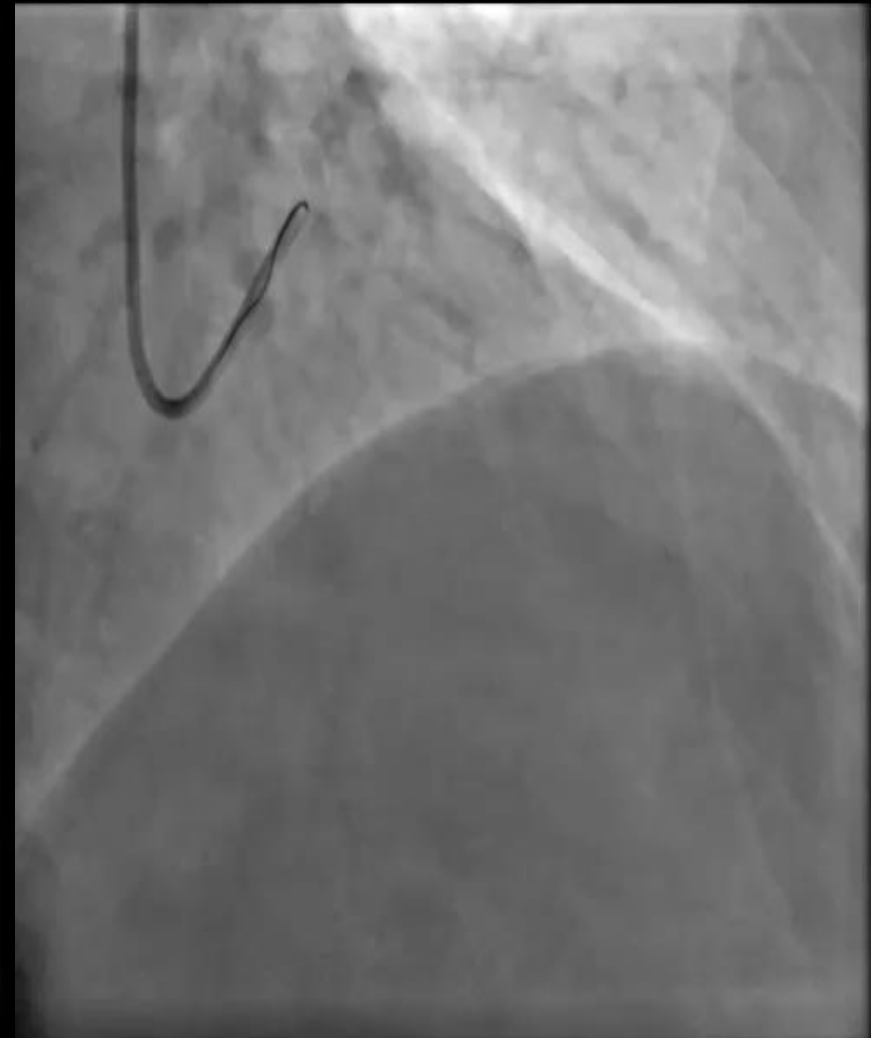


# Case 5 - 42M ISR CTO





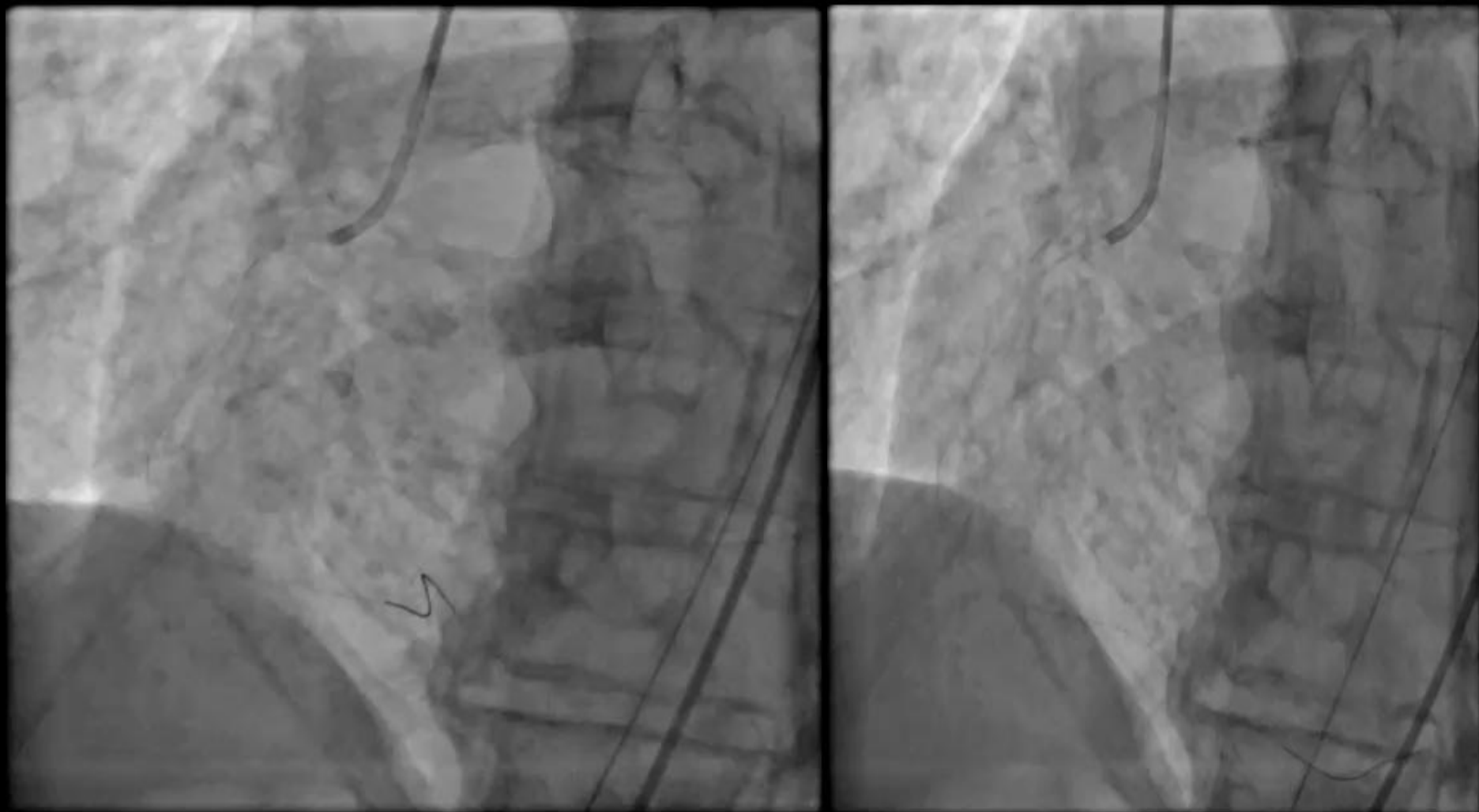
# Case 6 - 70M CTO LAD



Case 7 - 80M EF 20 % Cardio Shock Ostial LMS



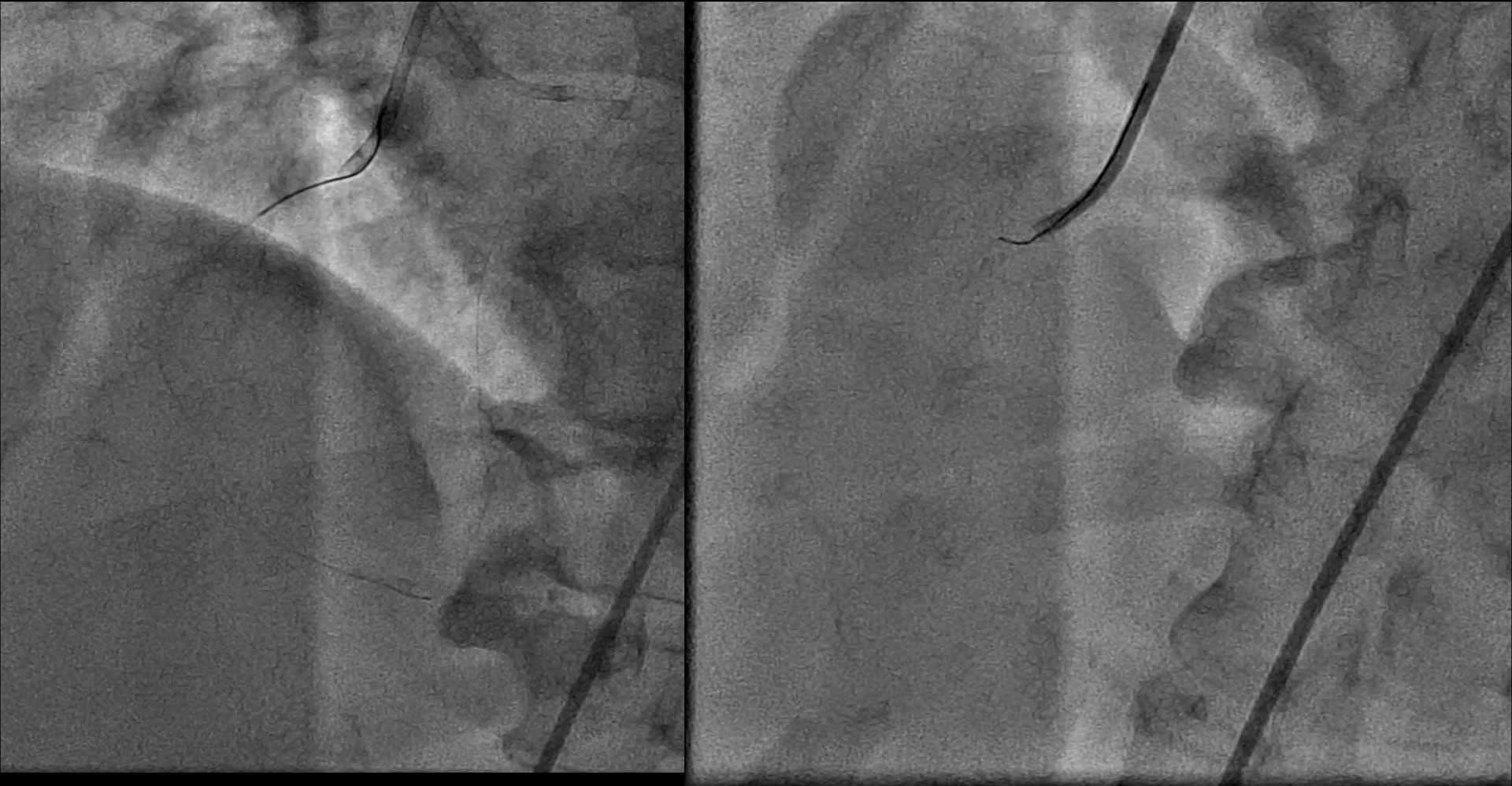
# Case 7 - 80M EF 20 % Cardio Shock Ostial LMS + Ostial RCA



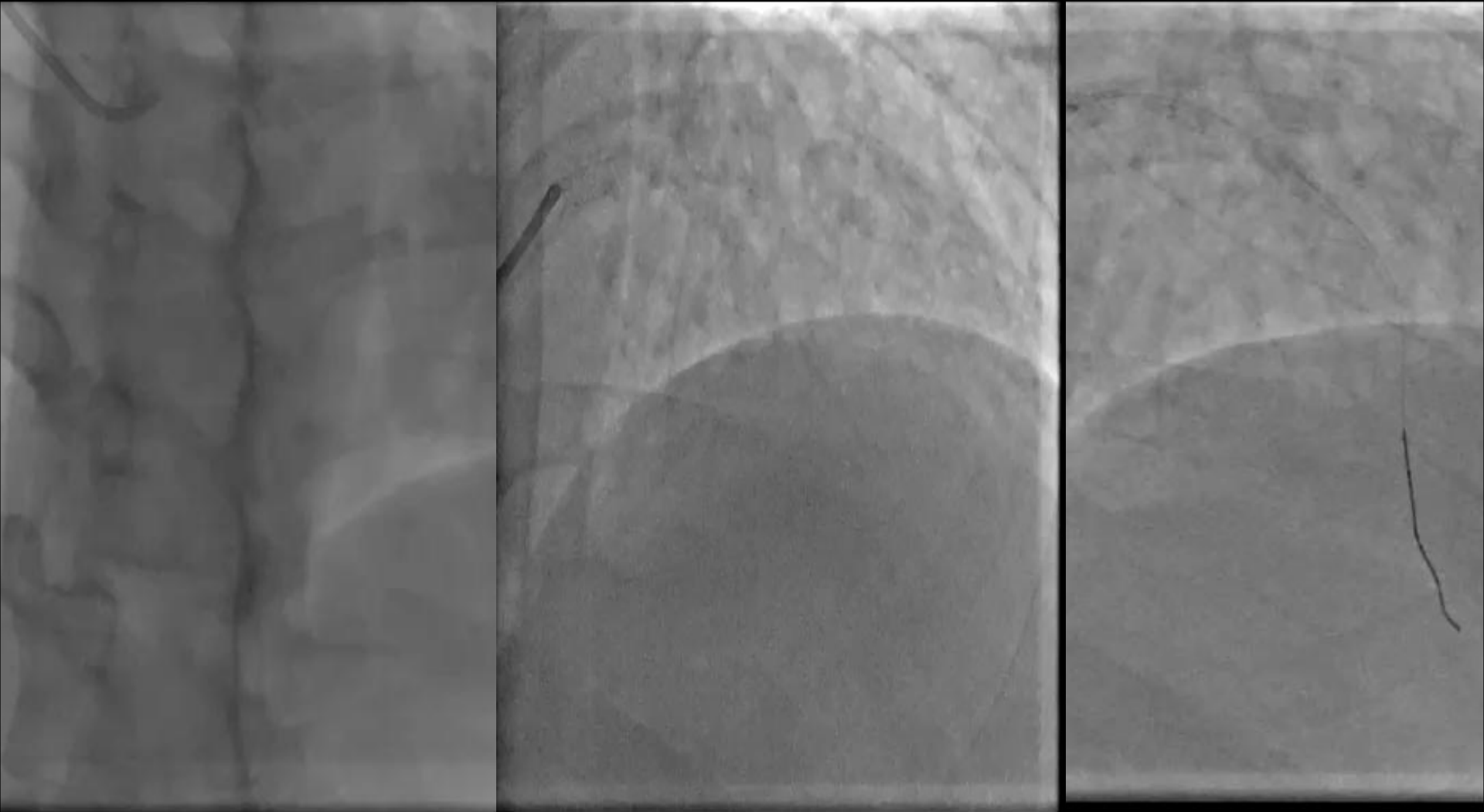
# 48 F - 1st Retrograde



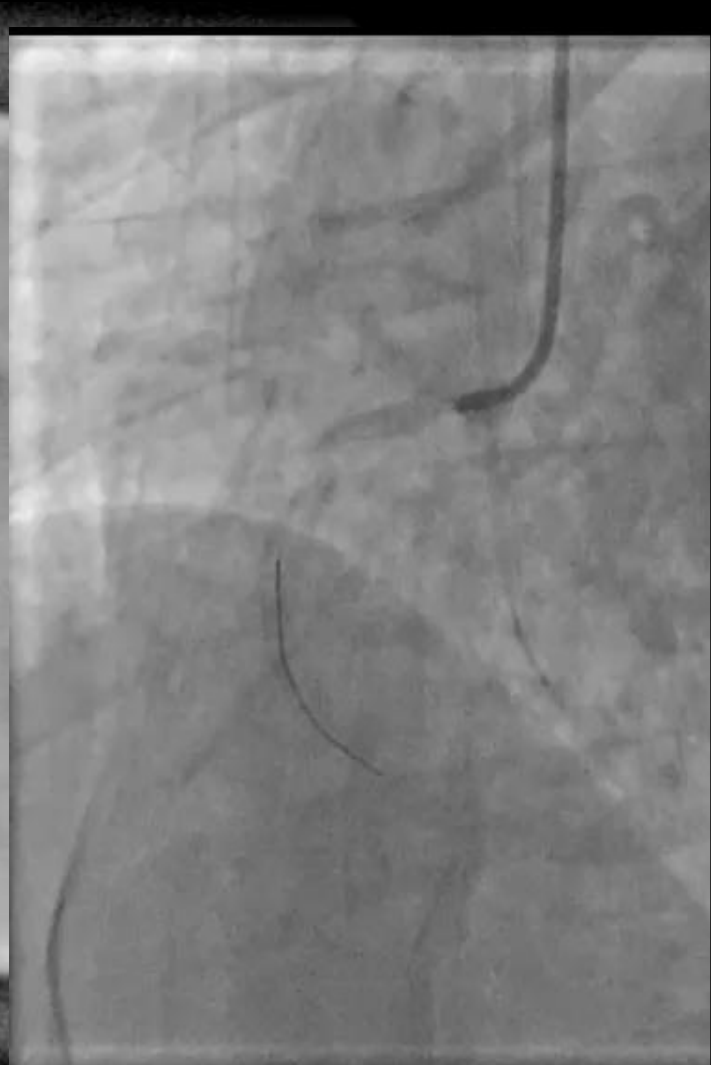
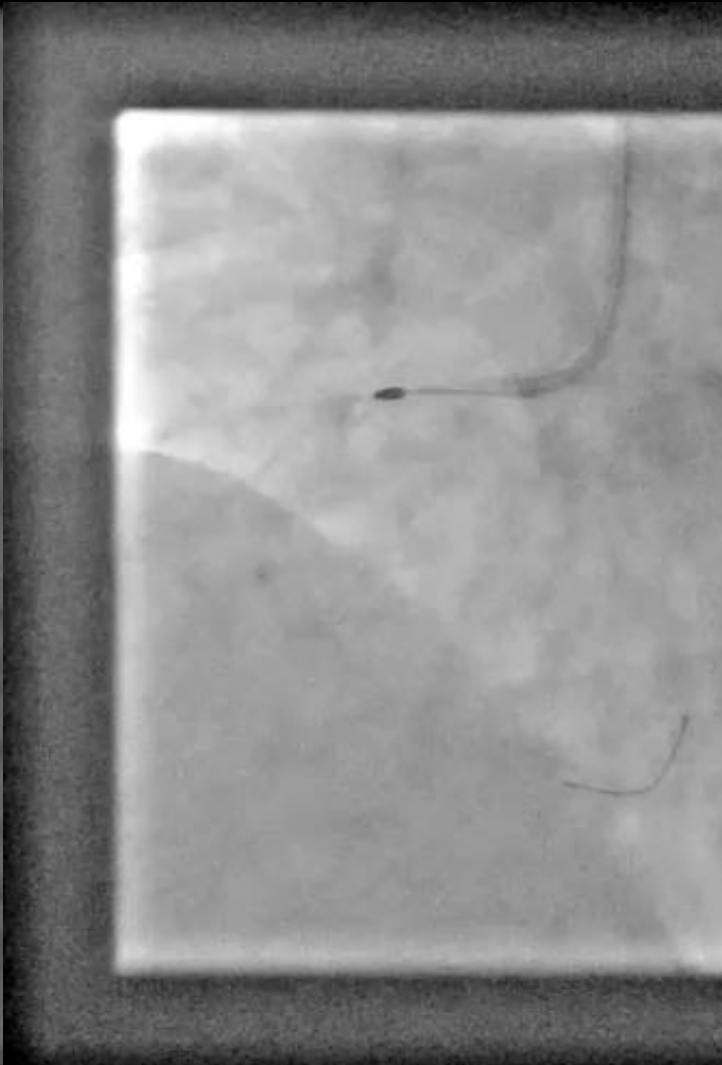
# 1st Retrograde



47M EF 15%



# 47M EF 15% - 1st Rotapro

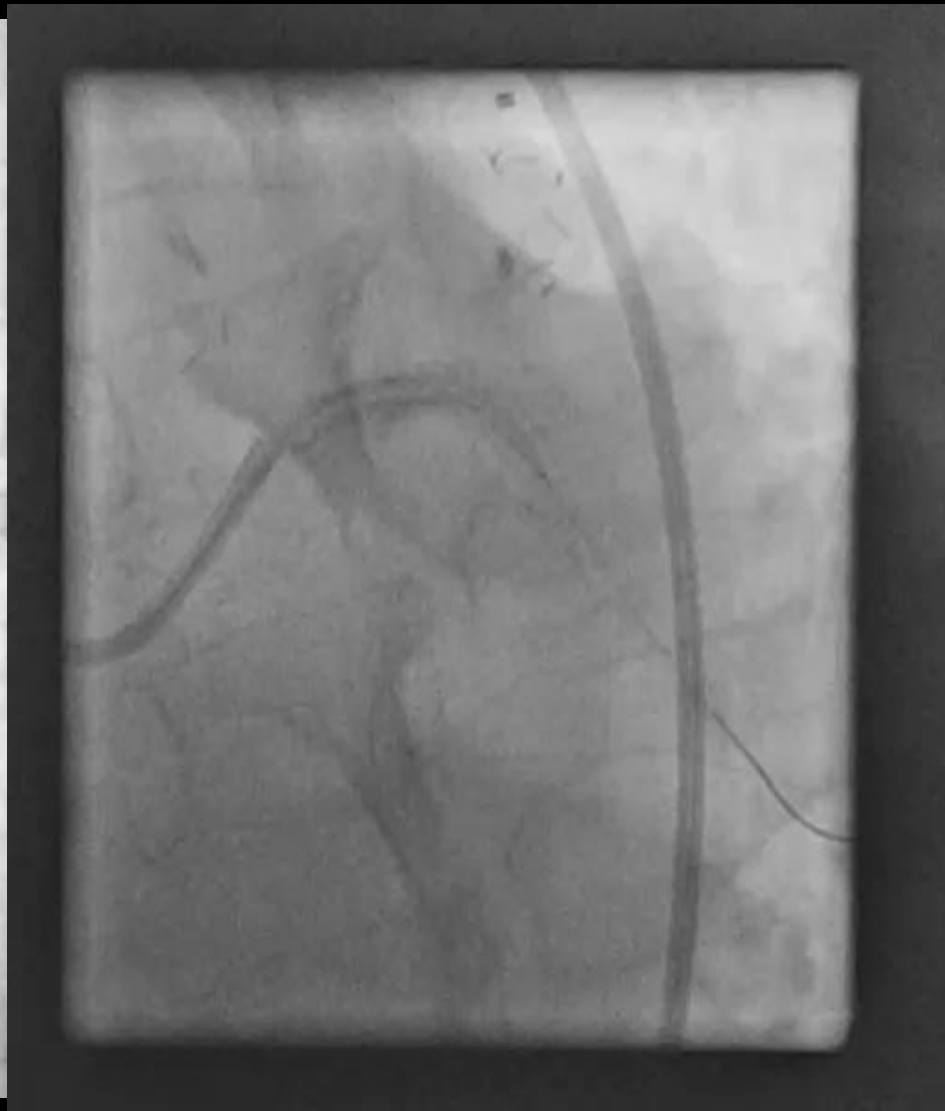
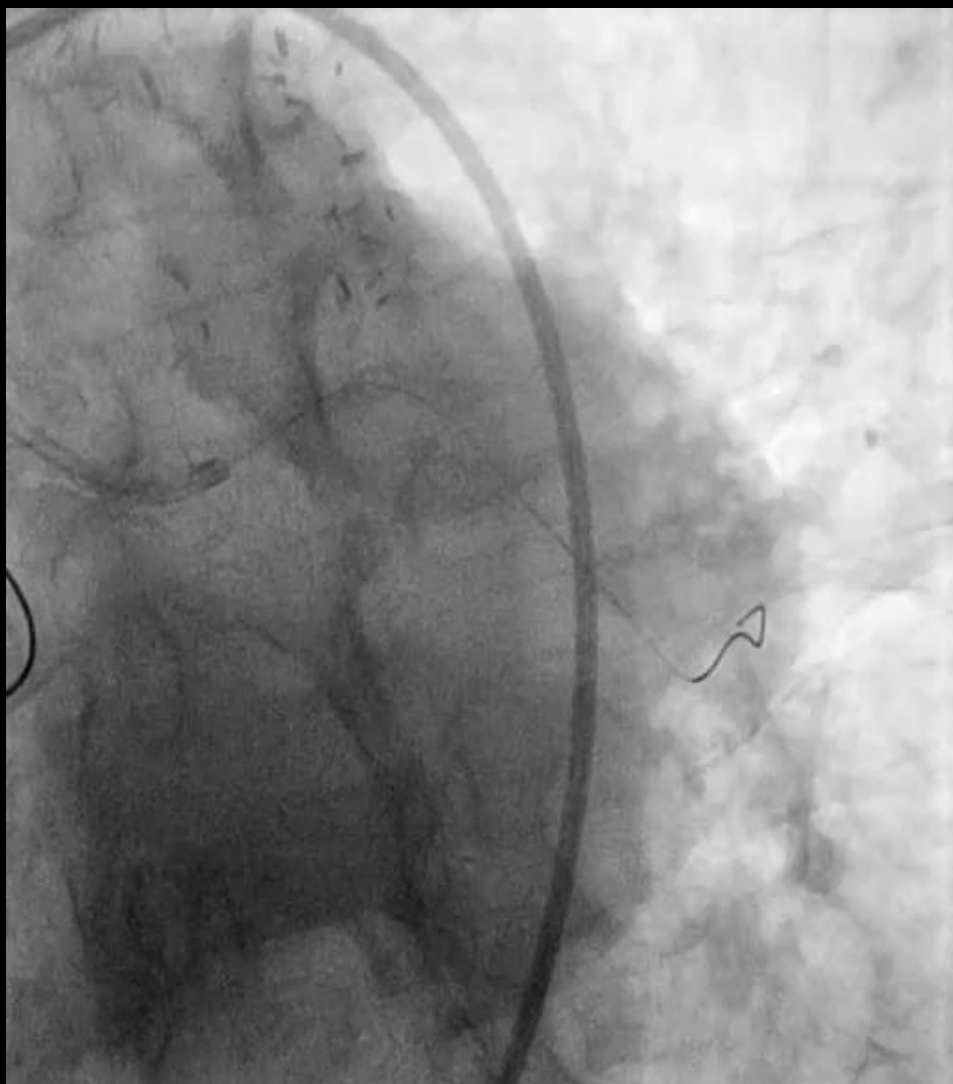


# Orbital Vs Rotational Atherectomy

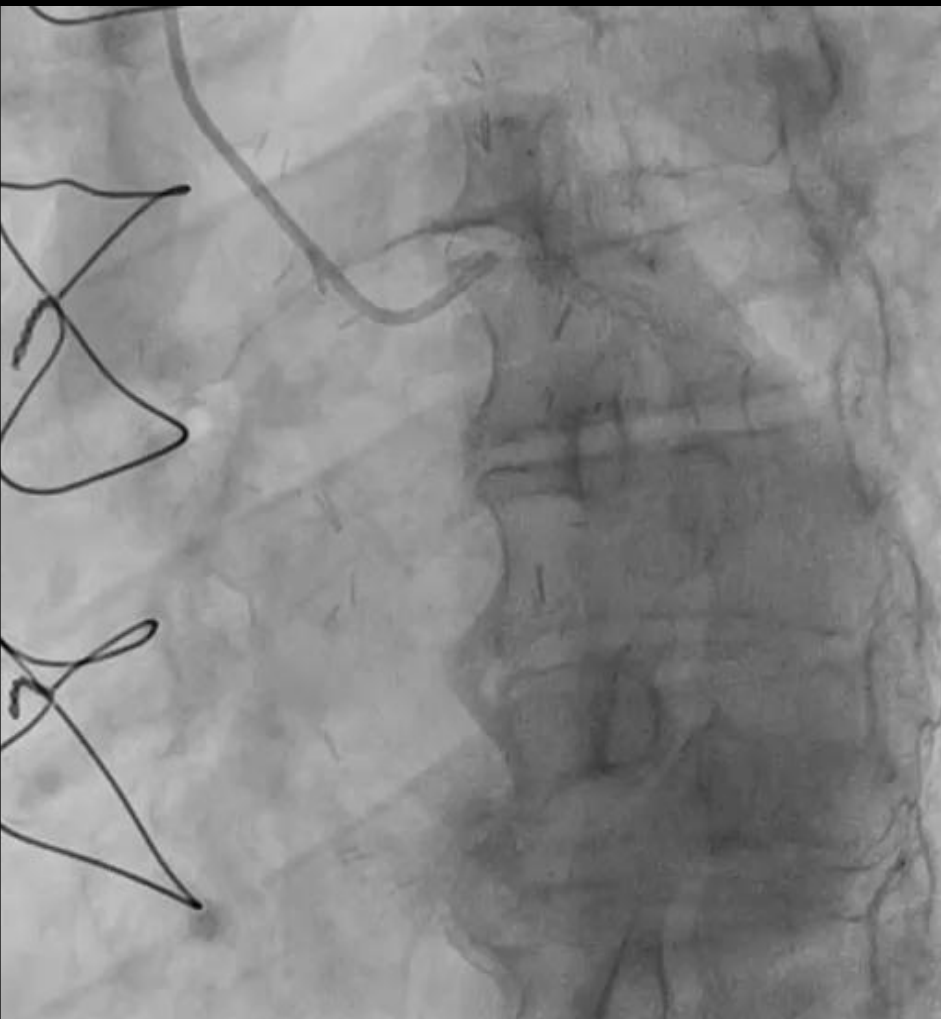




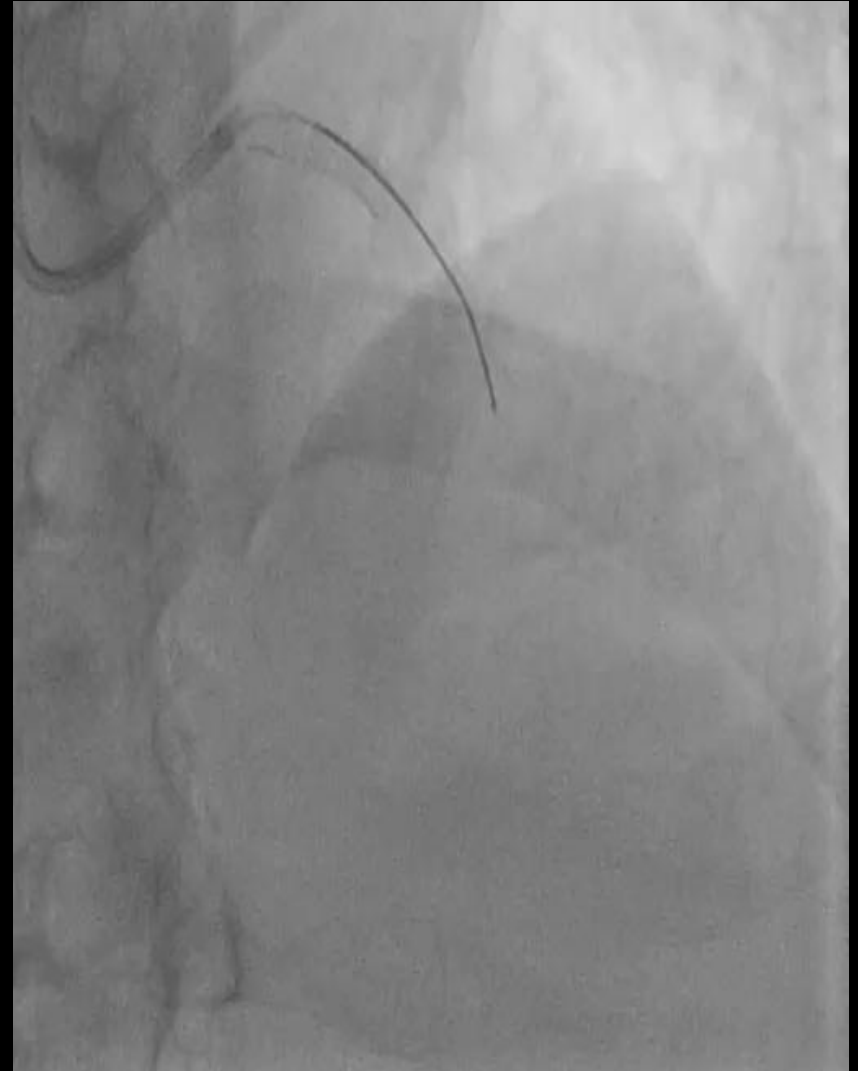
# Redo LMS 1st HDIVUS



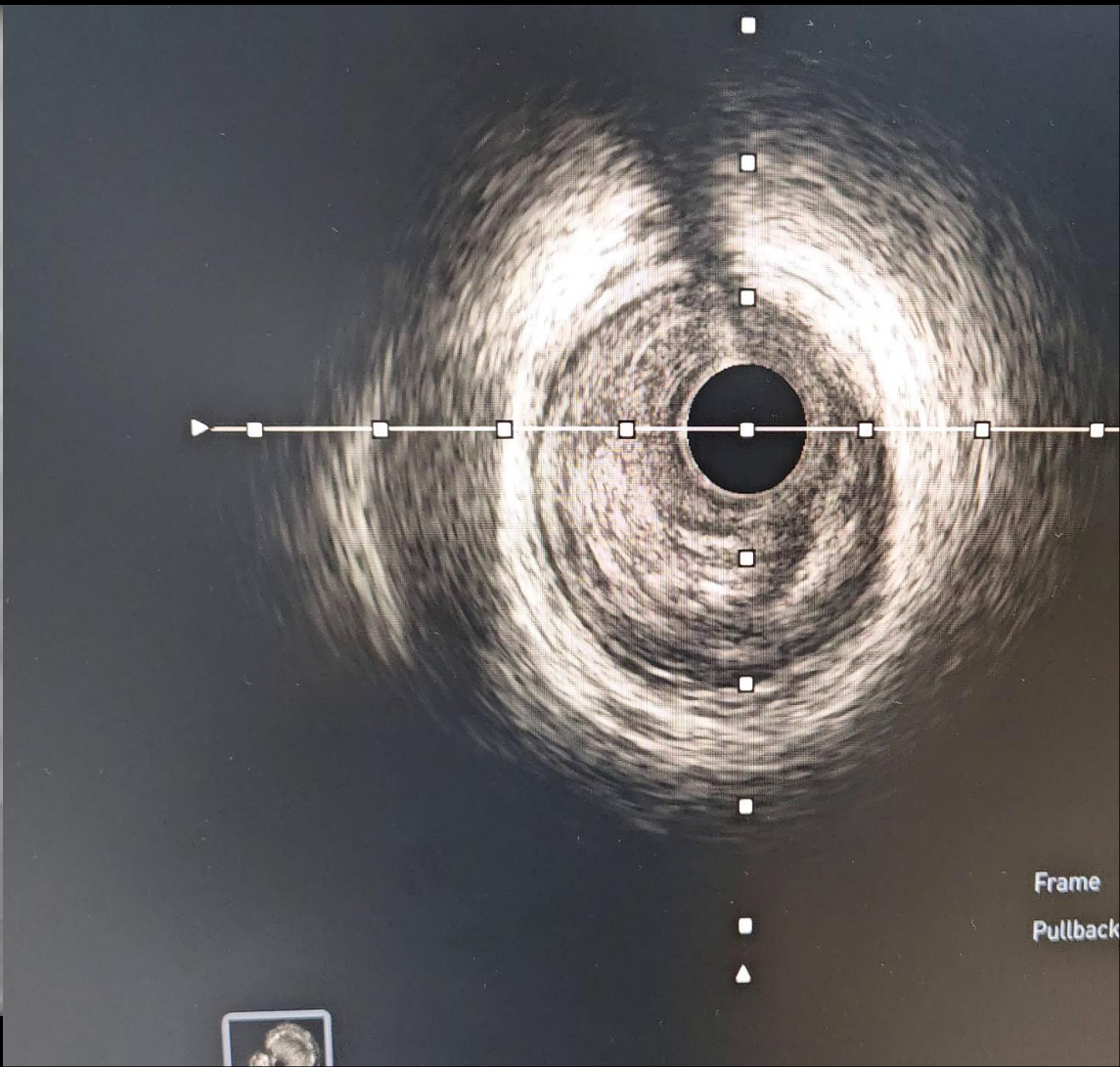
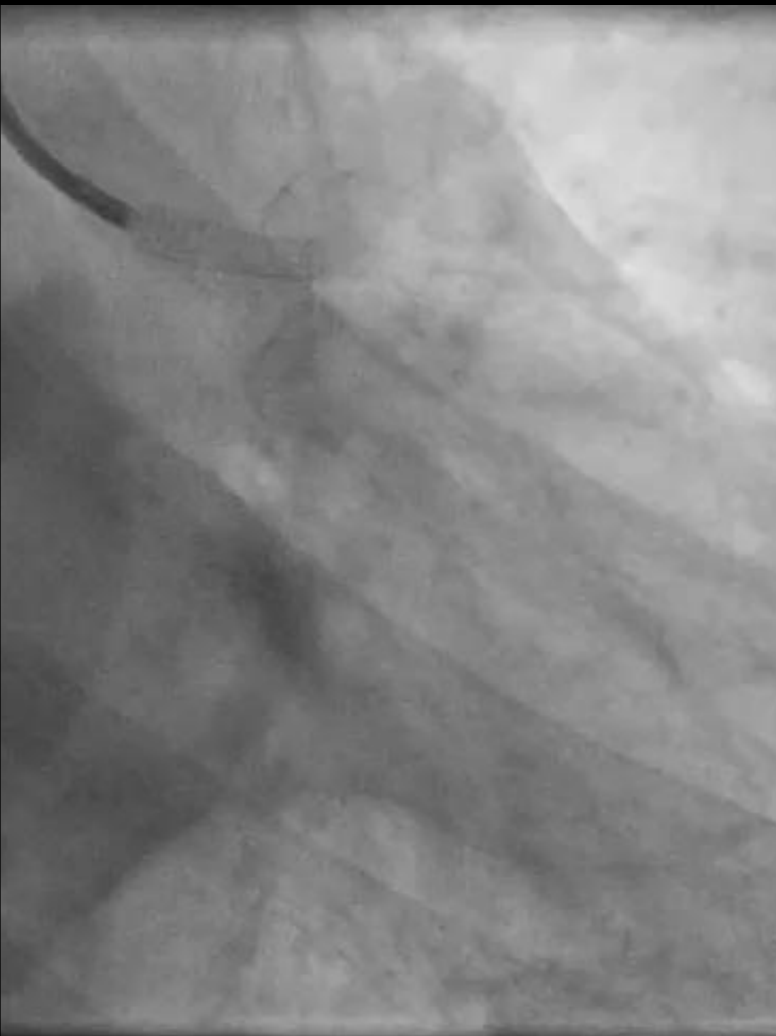
# Redo LMS



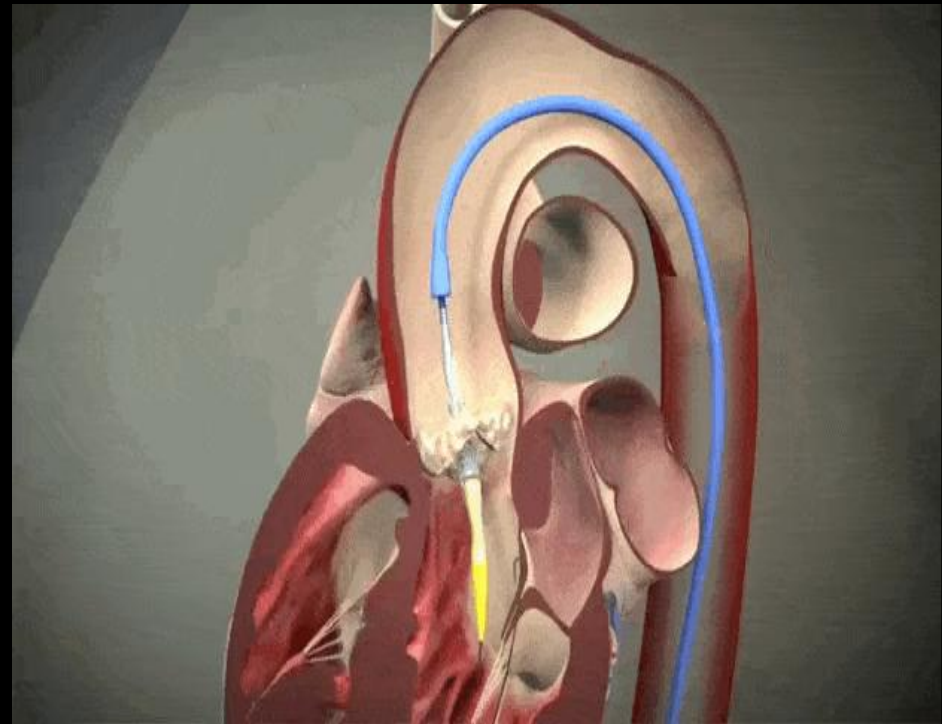
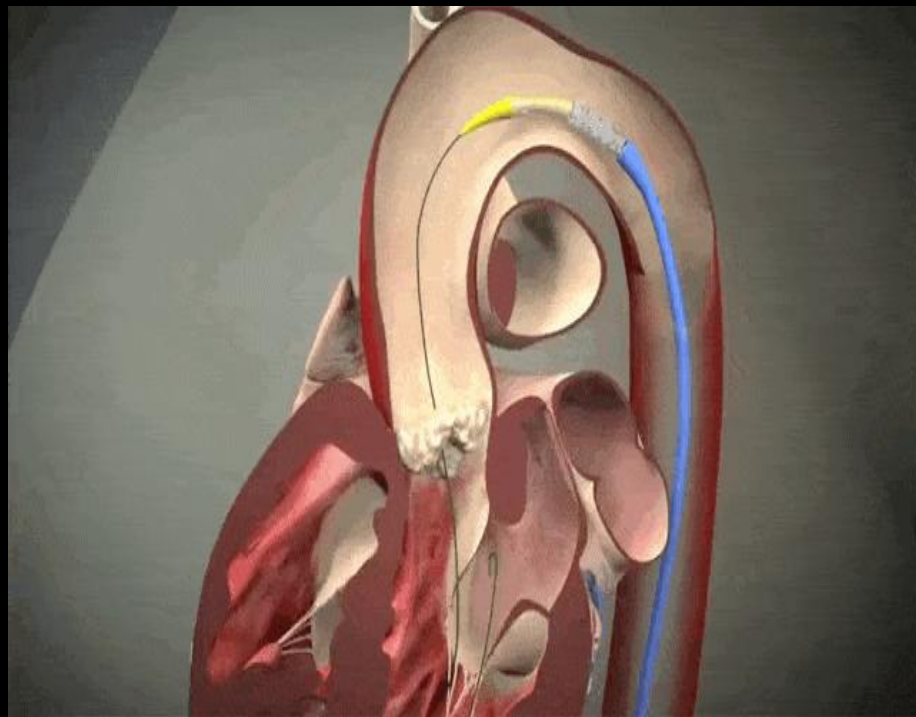
# 67M - LMS/LAD HD IVUS



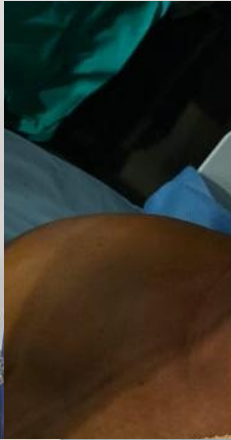
# HD IVUS Cx



# TAVI



# Firsts



Although I lay down a lot of metal, I can only do it with the right equipment!

Specialty Wires

Specialty Microcatheters

Intravascular Imaging

Calcium Modification



Stents & DEB

# Although I lay down a lot of metal, I can only do it with the right team!

Cardiac Surgeons

Cathlab Team

ICU team



Industry

Anaesthetists



# What lies ahead...

- More PCI!
- Better outcomes with better equipment
  - New wires and microcatheters
  - Rotapro
  - Diamondback
  - More DEB
  - HDIVUS
- More TAVI
- Mitraclip

A background image showing the curvature of the Earth from space, with a bright light source (sun or star) on the horizon, creating a lens flare effect. The text "THE FUTURE IS OURS" is centered at the top in a white, bold, sans-serif font.

**THE FUTURE IS OURS**

**Thank You and questions!**