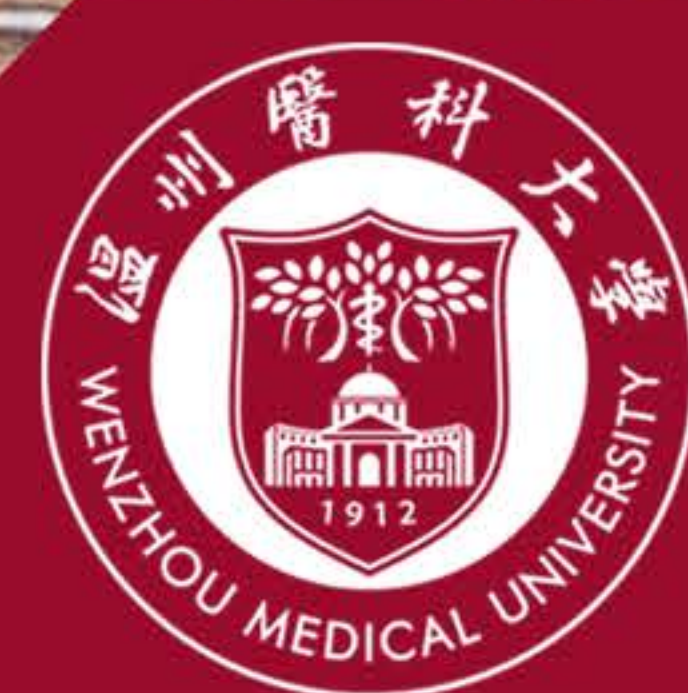


WMU

Confucius Institute Scholarship

Admission Brochure

2020



General Information

School of International Studies

Teaching Affairs Office

Ms. Sissi Yang

Tel.: +86-577-86699031

Email: ymz@wmu.edu.cn

Online application

<http://cis.chinese.cn>

University website:

<http://www.wmu.edu.cn>

School website:

<http://sis.wmu.edu.cn>



Welcome to Wenzhou Medical University (WMU)! Here our commitment to the pursuit of academic excellence and breakthroughs in medicine goes hand in hand with a practical focus on real-world progress, and the dedication to serving the nation is deeply rooted in a global perspective.



wmusis



wmusisfamily

Humaneness Reverence
Diligence Plainness
Making Efforts and Seeking Truth



This is Wenzhou, China

02

School of International Studies

04

05

Programs Introduction

07

08

09

Application Checklist

11

01

This is
Wenzhou Medical University

03

University Facilities

Sports and Social Activities

06

Program Highlight Activities

CIS Application

Campus Life

10

Campus Map

In this brochure, we hope that you will discover more about our city, our university, our school, our lively communication and our programs. We look forward for your participation in our programs.



Let's go out and discover the unique Wenzhou cuisines and also give your tastebuds a treat.
#foodie #Wenzhosnacks #knockedfish strip
#fishcake #fishpellet #wonton #lampcake



Wenzhou traditional culture.
#ouju #Chinese opera #Wenzhou



Top 10 famous mountain in China.
#Yandang Mountain
#nature #holidaygoing #hikinglovers



The girl immersed in the Ou Embroidery.
#ouxiu #intangible cultural heritage
#traditional craft



Hanging out with friends on weekends becomes a habit for me.
#walkingstreet #Five Horses Street
#shopping #foodandsnacks

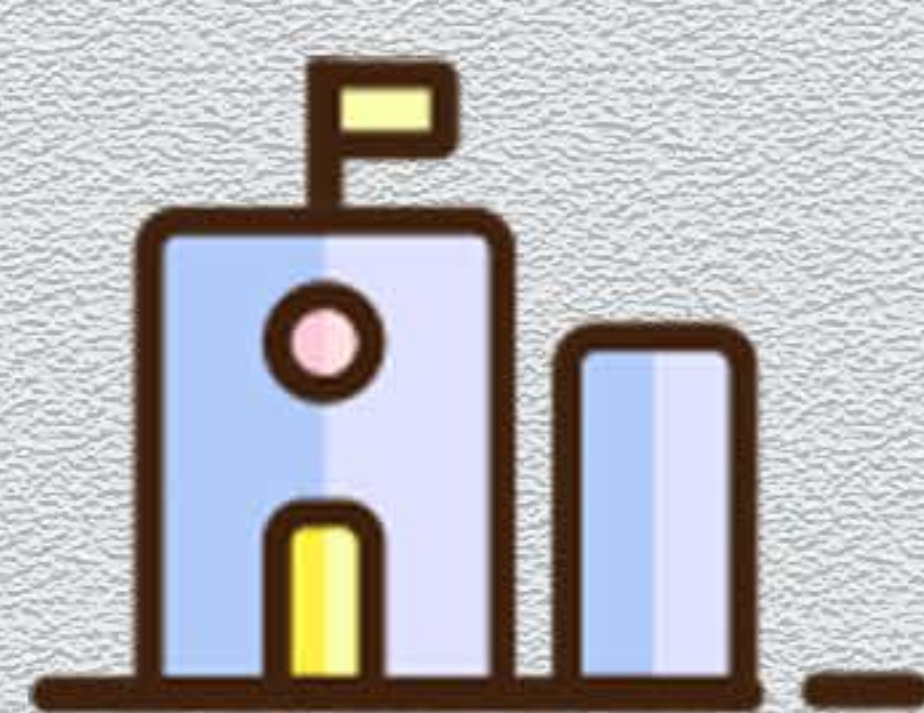
THIS IS WENHZOIU,CHINA

In southeast China, located in the joint zone of the Yangtze River Delta and Pearl River Delta, two of the most important economic zones in China.

23,233 FULL-TIME STUDENTS



10,000+ EMPLOYERS



17 SCHOOLS

5 AFFILIATED HOSPITALS



31 KEY LABORATORIES



Wenzhou Medical University (WMU) (<http://www.wmu.edu.cn/>) is a key institution of higher learning under the direct leadership of Zhejiang Provincial Government. WMU is listed in World Directory of Medical Schools compiled by WHO.

Student Education

4 National featured programs

Clinical Medicine, Optometry & Ophthalmology, Medical Laboratory, Pharmacy.

TOP 1

The qualifying scores to be enrolled by WMU for Science programs ranked the 1 among provincial universities in Zhejiang.

ESI

According to ESI (2019), the Chemistry, Pharmacology and Toxicology, Biology and Biochemistry of WMU ranked world's top 1%; Clinical Medicine ranked top 0.2%.

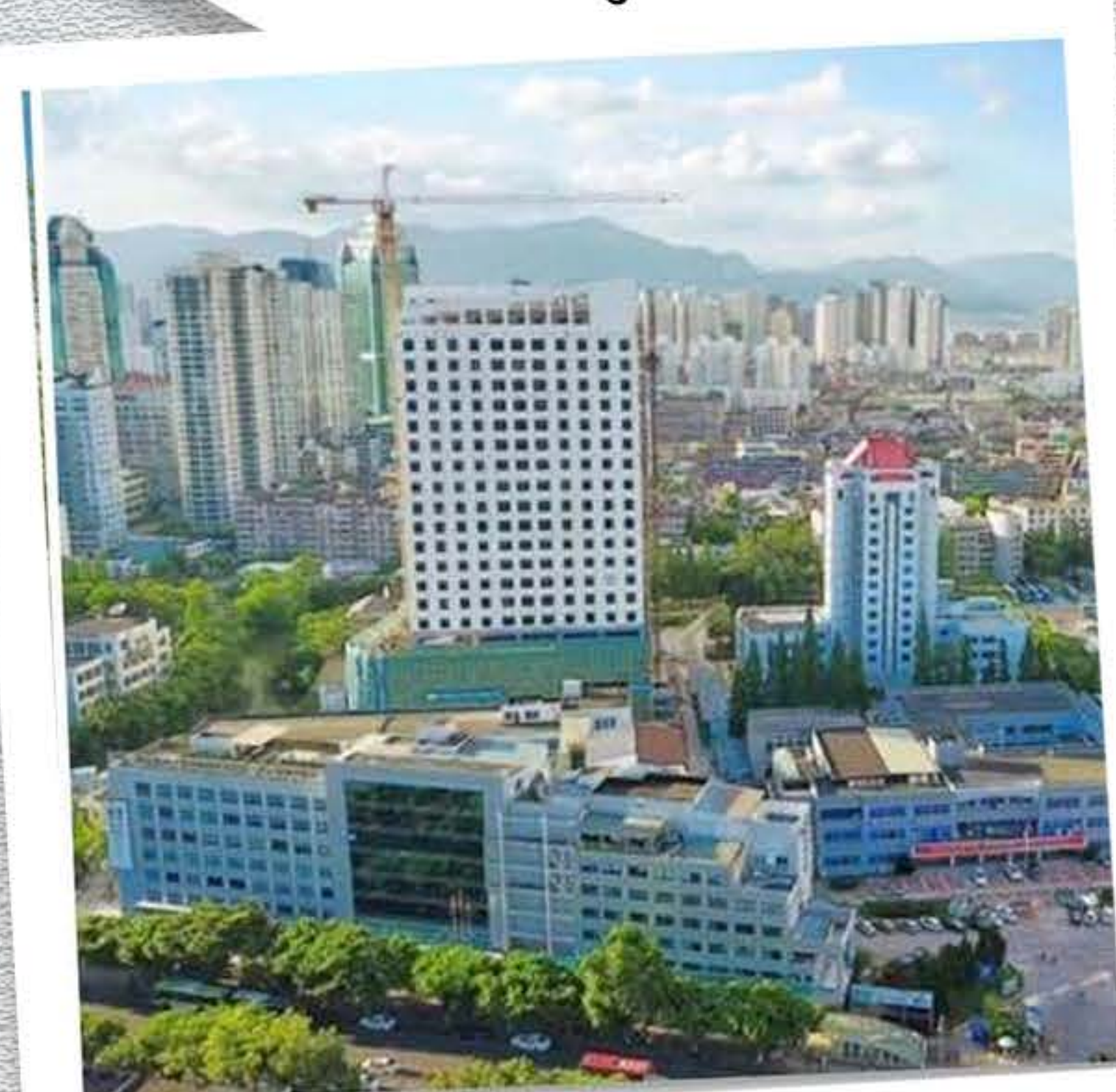
Internationalization

WMU has established partnerships with 31 countries (regions) of 138 education and research institutions.

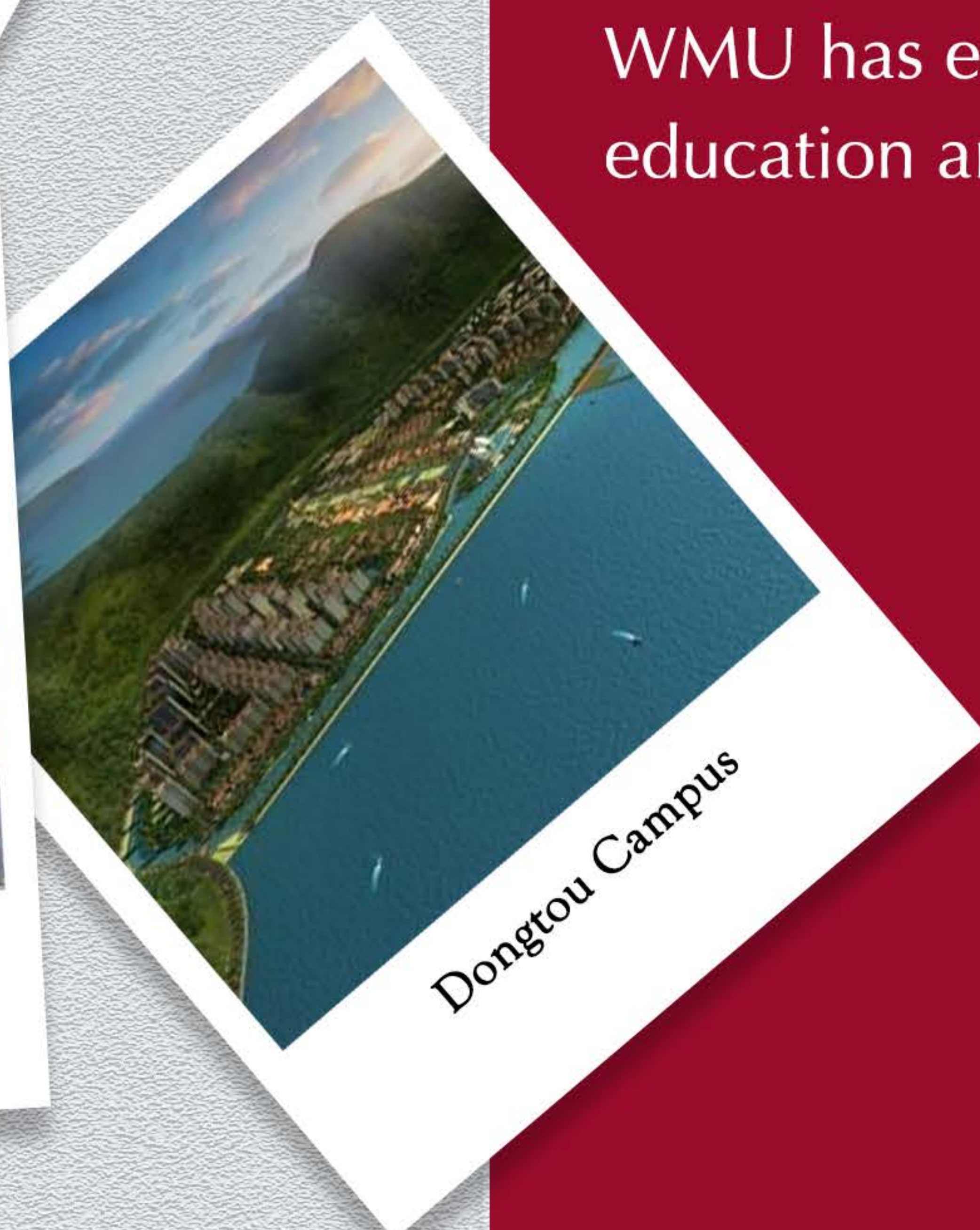
THIS IS WENZHOU MEDICAL UNIVERSITY



Chashan Campus



Xueyuan Road Campus



Dongtou Campus



SCHOOL OF INTERNATIONAL STUDIES

<http://sis.wmu.edu.cn/>

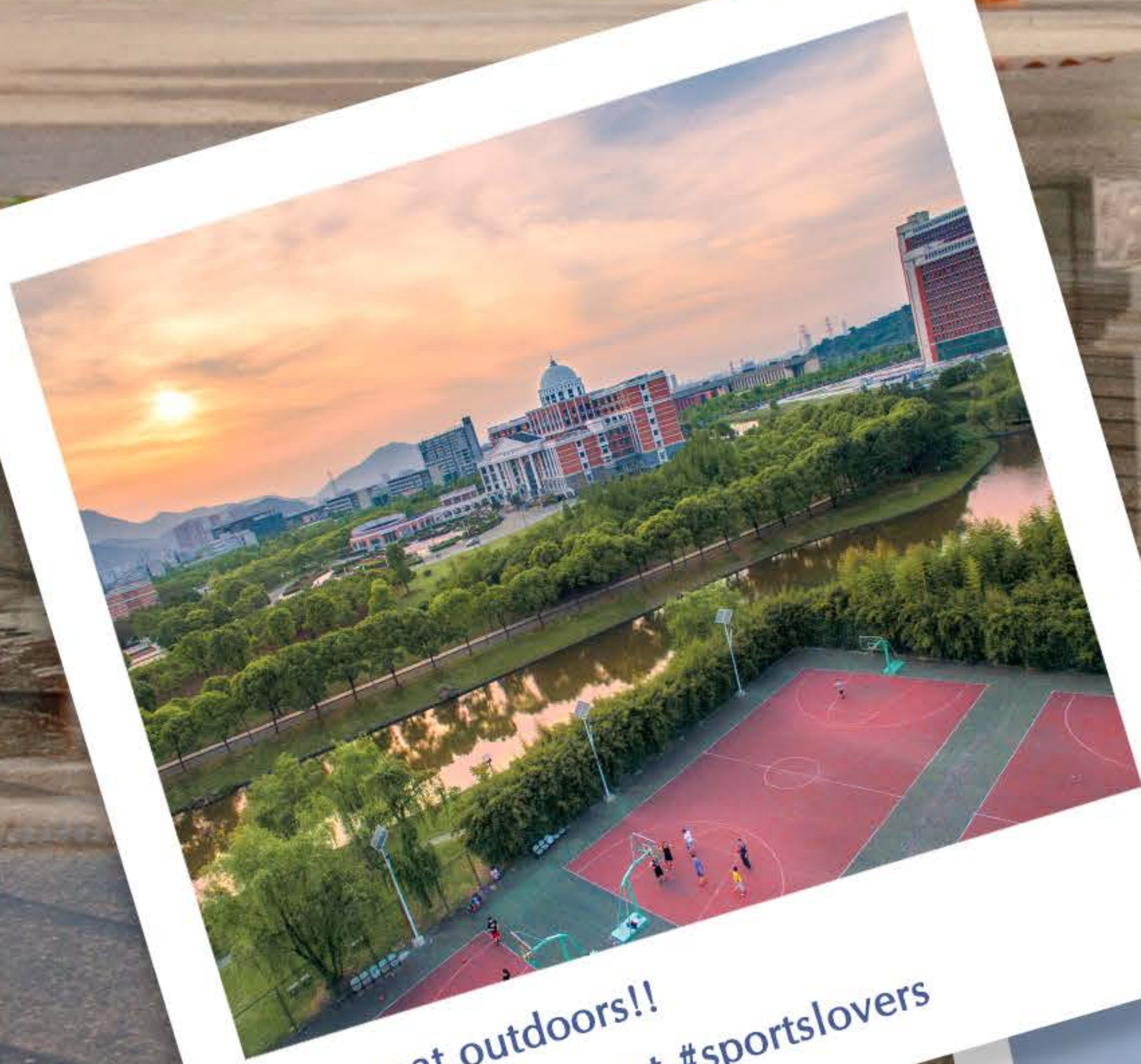
WMU founded School of International Studies (SIS) in April of 2006 with its primary education and academic degrees taught in English. WMU became one of the authorized universities to recruit overseas students for medical education.

With academic admission from around the globe, WMU boasts over 900 full-time foreign students from 68 countries expanded across continent of Asia, Africa, Europe, America, and Australia, as well as more than 100 short-term foreign exchange students from various countries in the world.

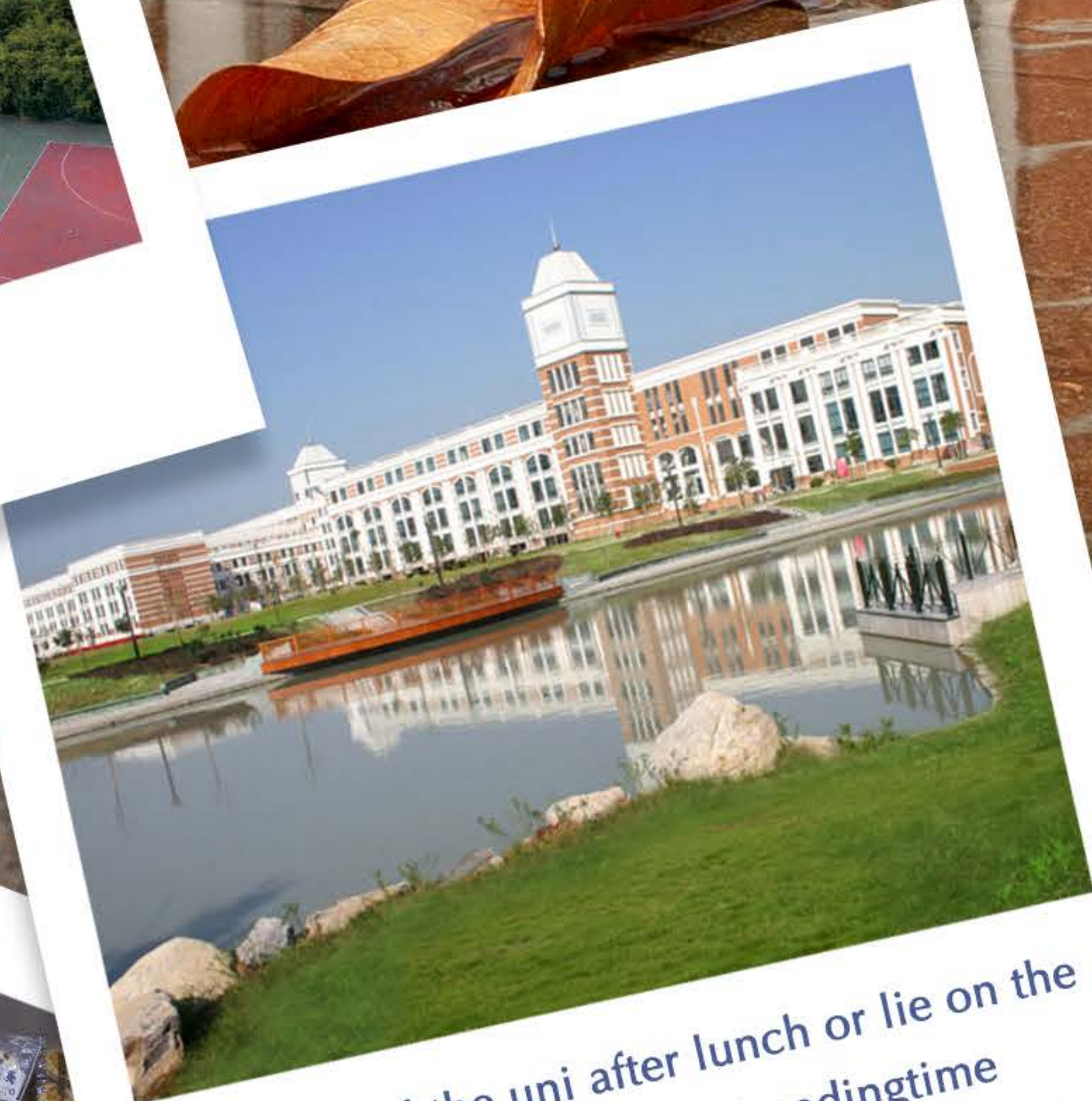
Some of our programs:

- ※ MBBS: Bachelor of Medicine & Bachelor of Surgery (Since 2006)
- ※ BDS: Bachelor of Dental Surgery (Since 2006)
- ※ Bachelor of Pharmacy (Since 2015)
- ※ MBBS-MD: Dual Degree Program with Medical University of Lublin, Poland (Since 2016)
- ※ Kinds of programs for Master's Degree and PHD (since 2014)

Please check our official website for all the programs and detailed information if you're interested.



The great outdoors!!
#basketball #sunset #sportslovers



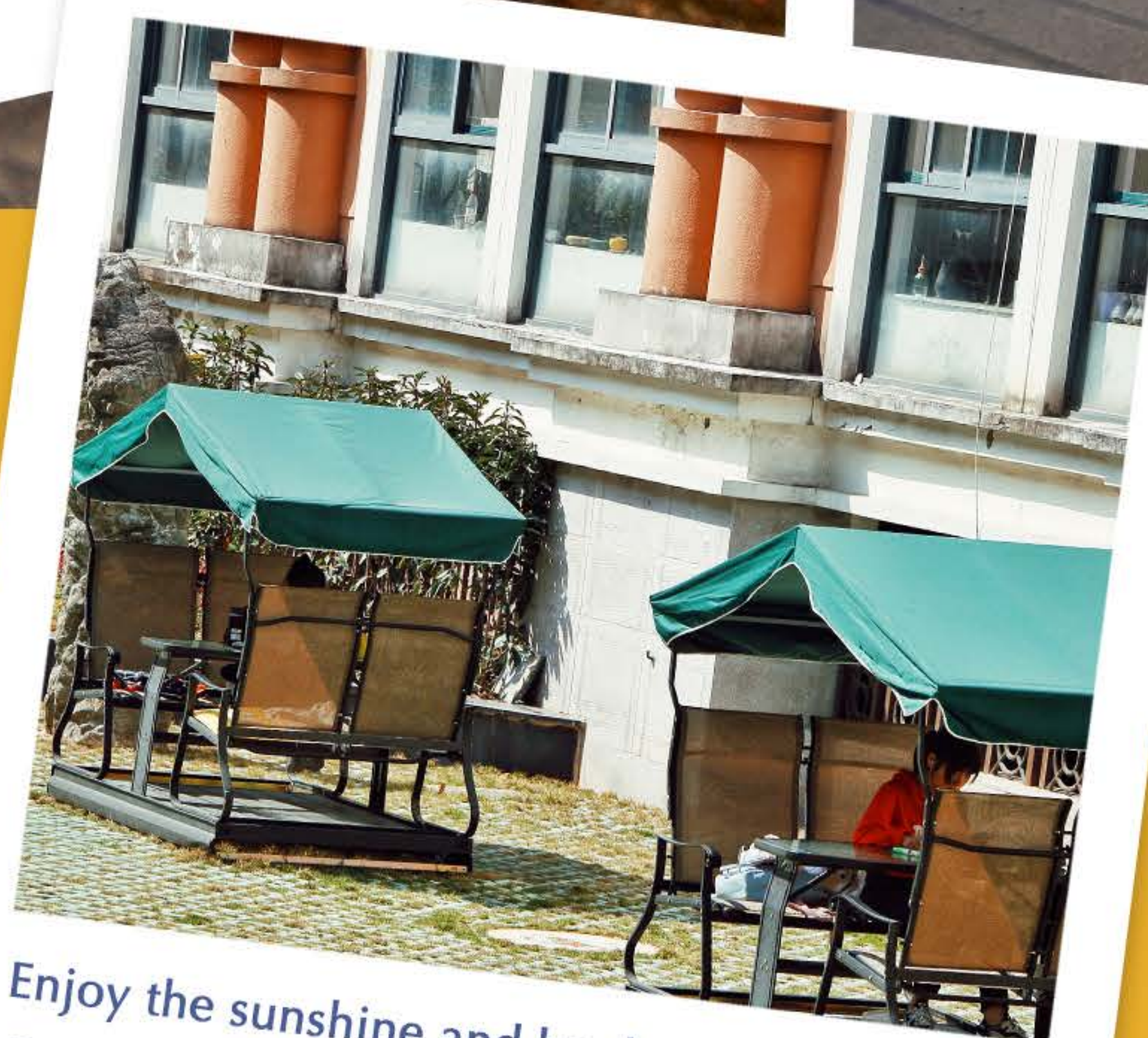
Walk around the uni after lunch or lie on the grass. #takeanap #chatting #readingtime



Grab a sandwich and a bag of milk.
#vendingmachine #breakfasttime
#afternoonteatime



A convenient environment
studying and thinking here.
#uni library #freewifi
#computersandsoftware



Enjoy the sunshine and books!!!
#studyspace #wmu

UNIVERSITY FACILITIES

We invest to create the right environment for you.



Volunteer Activity



Hospital Bedside
Accompanied Reading



Cultural Festival



Singer Competition



Volleyball Match

SPORTS & SOCIAL ACTIVITIES

Explore your life outside the classroom.



PROGRAMS INTRODUCTION

CATEGORY

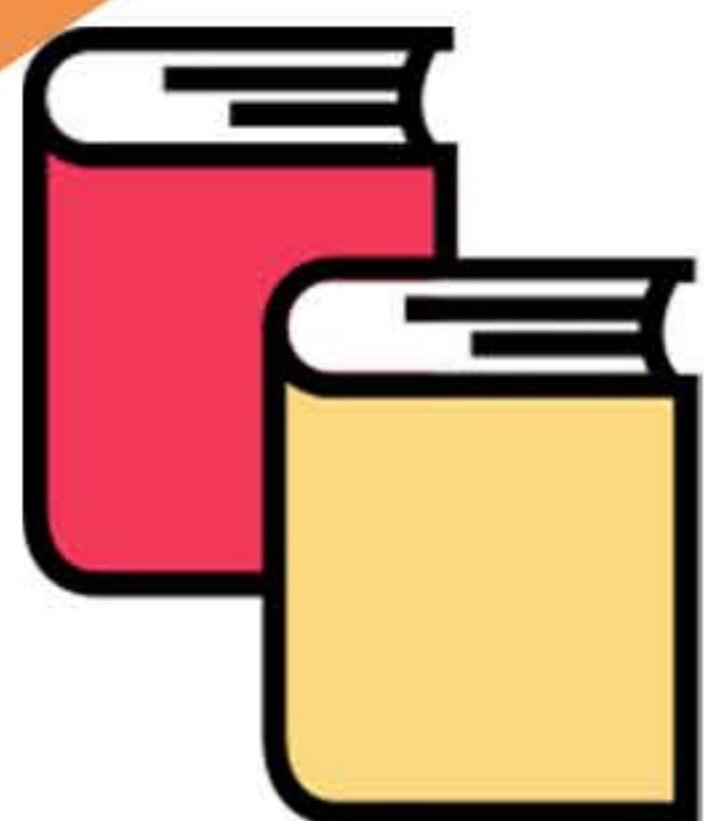
ONE SEMESTER STUDY

PROGRAM	REQUIREMENTS
CHINESE LANGUAGE & LITERATUR	HSK 180 (LEVEL 3) HSKK REQUIRED
TRADITIONAL CHINESE MEDICINE	HSK REQUIRED

COURSE OUTLINE

CHINESE LANGUAGE COURSE	TRADITIONAL CHINESE MEDICINE COURSE
<ul style="list-style-type: none">-Chinese Literature-Extensive Chinese-China in Brief-Oral Chinese-Comprehensive Chinese	<ul style="list-style-type: none">-Diseases in Chinese Medicine-Human Body in Chinese Medicine-Chinese Medicine Diagnostics-Chinese Pharmacology-Meridians and Acupoints-Chinese Medicine Treatment-Tuina-Acupuncture

SCHOLARSHIP
COVERS



TUITION FEE

ACCOMMODATION FEE



COMPREHEBSIVE
INSURANCE



MONTHLY LIVING ALLOWANCE
(2500 YUAN PER MONTH)



PROGRAM HIGHLIGHT ACTIVITIES

In addition to the regular curriculum, Wenzhou Medical University and SIS set up numerous events and activities for students to take part in, enriching their experience and allowing them to better understand Chinese culture, people and society.



#makingdumplings
#dumplingteaching
#frieddumplings
#steameddumplings



#hikingday #hikinglovers
#Yandangmountain #group hiking



#cookingclasses
#localfood #experience



#Dragon Boat Festival homestay experience



#rice sculpture #cute#Ou sculpture
#intangible culture heritage

APPLY NOW

Mar.2020 WMU Confucius Institute Scholarship Application Requirements

The “Confucius Institute Scholarship” (CIS) program is for the aim of cultivating qualified Chinese language teachers and facilitating the promotion of Chinese language and culture.

Eligibility

Non-Chinese citizens;

In good physical and mental condition, with good academic performance and conduct.

Restrictions

ONE SEMESTER STUDY PROGRAMS:

The program commences in March 2020, and provides scholarship of a maximum of 5 months. Applicants holding the X1 or X2 visa are not eligible.

Application Online: <http://cis.chinese.cn>

Application Deadline: Nov 20th, 2019



**FOR INFORMATION,
CONTACT MS. SISSI YANG**
TEL.: +86-577-86699031
EMAIL: ymz@wmu.edu.cn





HEWA YAMAHINGHE DEVINDA LAKSHAN
杜宇 '24
Sri Lanka

Why WMU ?

I wanted to follow up Chinese language and traditional Chinese medicine, then I found the best place to achieve it. When I apply this scholarship the director and other staff helped me very sincerely and kindly. I really like the people and the environment, they are very friendly. Also the beautiful surroundings of the university helped me to improve my learning skill too.

My Future Goal:

I'm an undergraduate of University of Kelaniya, Sri Lanka, who majors in tourism and management degree. I'm also learning Chinese language too.

I hope to use the knowledge which I've got from this university for my future activities. I hope to start a tour agency and give a great hospitality experience for Chinese tourists.

CAMPUS LIFE

Discover what is like to live and study at WMU. Get your unique study experience while practicing your Chinese, learning about Chinese culture, and making friends and memories.



VELIKOVA ANTOANETA VELIKOVA
安塔 '35
Bulgaria

Why WMU?

I always wanted to visit Wenzhou and I had an opportunity to study Traditional Chinese Medicine there. Teachers are high professionals with long medical experience and the university has good facilities for study and practice. The campus is a nearby mountain with convenient transportation to the city center. It was such an amazing experience to study in one of the most beautiful cities in China and I meet new friends from all over the world.



WAITHAYASIN NEERANART
白玫 '23
Thailand

来到温州医科大学第一的感觉就是“放松”，因为我们的校园环境很好，风景优美，天气也非常好，老师们也对我很热情。这次机会让我的汉语听说读写能力提高了很多，回国了之后使我通过了HSK5级考试。

APPLICATION CHECKLIST

Documents Required:

ALL APPLICANTS

- ☐ Complete the online application at <http://cis.chinese.cn>
- ☐ A scanned copy of passport photo page
- ☐ A scanned copy of HSK and HSKK score reports (valid for 2 years)
- ☐ A recommendation letter by the Confucius Institute

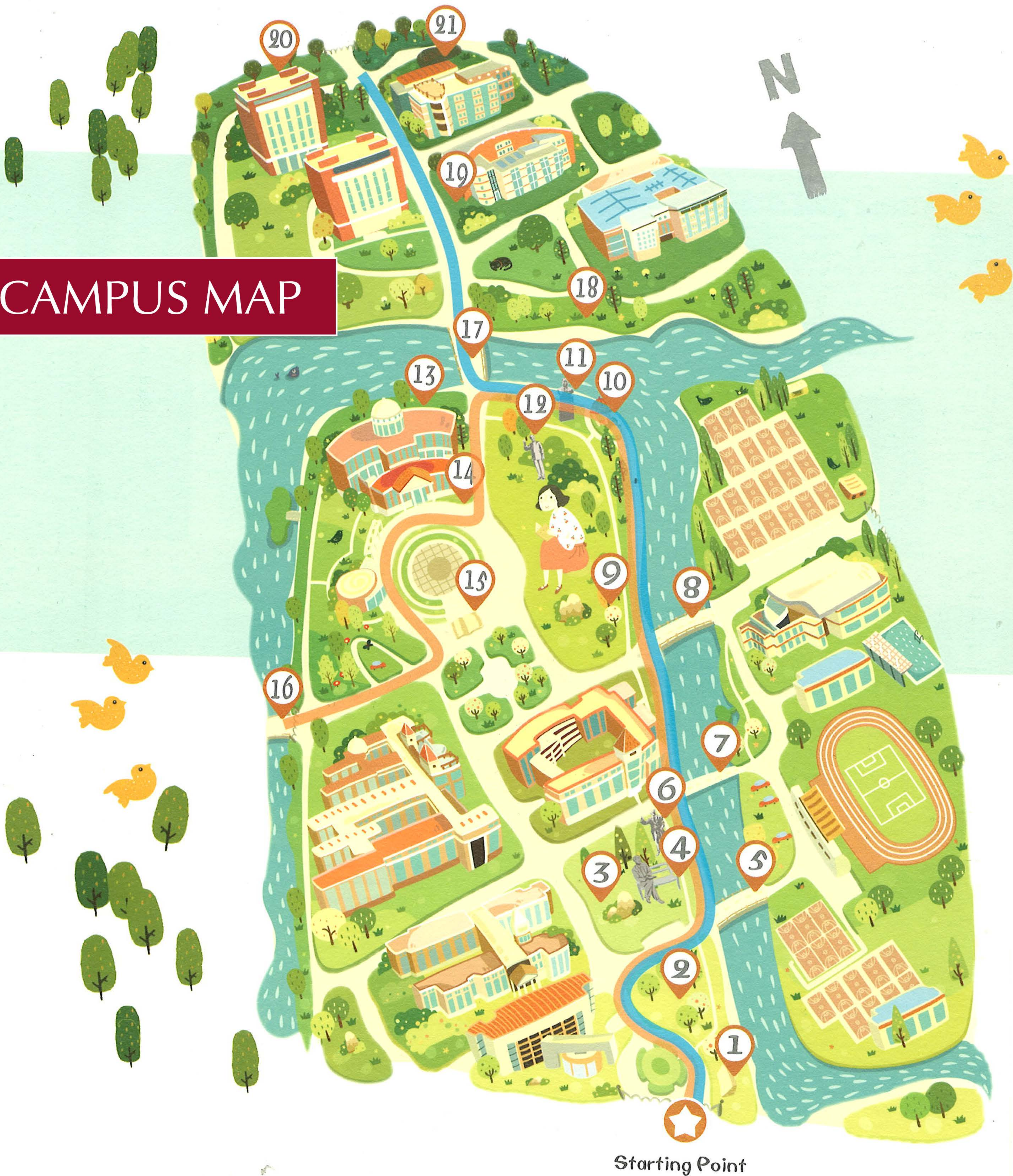
APPLICANTS UNDER 18

- ☐ Certified documents of designation signed by their entrusted legal guardians in China
- ☐ Applicants shall also provide additional documents required by the host

Hanban will complete the scholarship review and publish the results three months before enrollment of the scholarship winners.

Welcome to WMU!

CAMPUS MAP



- | | | | | |
|-----------------------------------|----------------------------------|----------------------------------|--|----------------------|
| 1/Stone tablet of University Name | 2/Alumni Forest | 3/Medical Forest | 4/Statue of Prof. Qian Li | 5/Nightingale Bridge |
| 6/Statue of Dr. Zhou Jian | 7/Curie Bridge | 8/Zhongjiang Bridge | 9/Century-old Heritage Memorial Forest | |
| 10/Yuqing Forest | 11/Statue of Mr. He Chaoyu | 12/Statue of Prof. Miao Tianrong | 13/Library | |
| 14/The University Motto Stone | 15/Medical Students Oath Tablet | 16/Fleming Bridge | 17/Hippocrates Bridge | |
| 18/Sports Sculpture Groups | 19/The Human Body Science Museum | | 20/History Museum | |
| 21/Experimental Animal Monument | | | | |