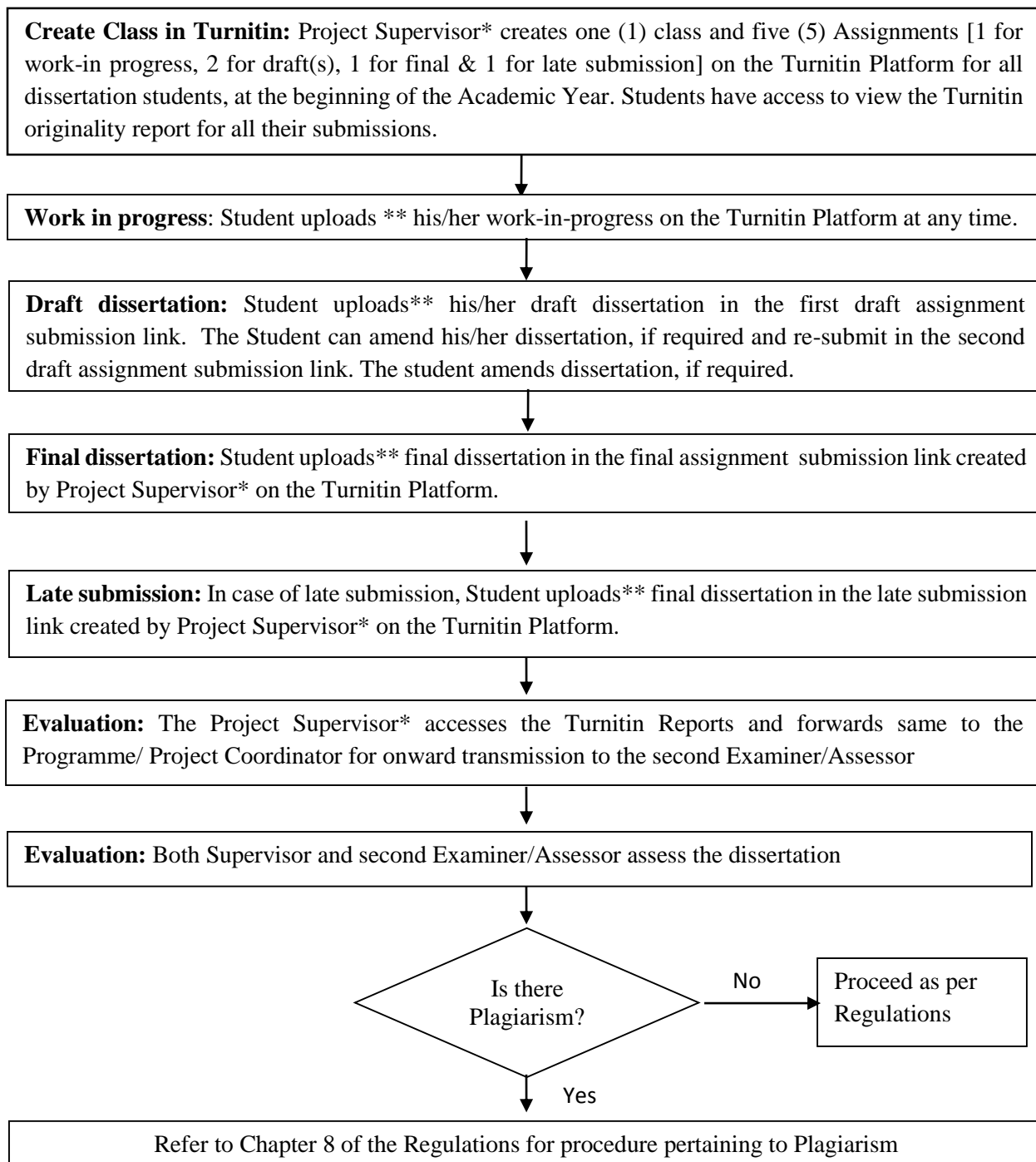


## FLOWCHART FOR THE SUBMISSION OF DISSERTATION THROUGH THE TURNITIN PLATFORM



**Note:**

- 1) \* In case students are allocated Part-Time Supervisor(s), the class is to be created by the Programme/ Project Coordinator.
- 2) \*\* Students should access Turnitin platform using G Suite (@umail.uom.ac.mu) account.
- 3) Similarity index in Turnitin should not be interpreted as the % of Plagiarism as referred to in Chapter 8.
- 4) Project Supervisor must ensure that Work-in-Progress draft(s), final and late submission assignments are created in the same Class.
- 5) Dissertation in the context of the flowchart refers to the main body of the dissertation comprising of the Introduction up to the last Chapter.
- 6) Late Submission Assignment link will be accessible for a duration of 10 working days after the official deadline for submission of dissertation.

Updated by QA on 01.03.17